

SACER[®]

REMANUFACTURING SOLUTIONS

SACER OFFERS BIG PROMOTIONS FOR ALL REMAN PARTS



REMAN CATALOGUE 2017/2018

Instrument Cluster & Dashboards - ABS / ECU / TPS Repair Spare Parts
Automotive Semiconductors - Precise Equip & Tools for Electronic Repair



Order **now** at
Sacer's online shop!
www.sacer-shop.com

Semiconductor & Automotive Components for Electronic Rebuilders



ABOUT SACER

Welcome to Sacer: where experts, teamwork and technology together achieve a competitive advantage for you. Through honesty, transparency and trust we build long-term partnerships. You are the focus of everything we do.

Sacer is a steady growing manufacturer with highly skilled and experienced electronic engineers, founded in 2007, which develops and produces electronic control modules in the automotive aftermarket. We have our own engineering team in Europe, together with more than 100 employees in China and we manage to create the quality bridge between European design and Chinese manufacture.

When we start to investigate in developing a new product, we first focus on the original failure, and try to find out why it breaks. After this we find out how we could improve it to get a longer lifetime. We well understand the European Quality, and strictly process the ISO/TS16949 in production, from design till final delivery. We work very close with OE supply chain in China, therefore we could supply our own designed OE quality products in aftermarket.

Quality people + Quality processes = Quality products



SACER TECHNOLOGY PRODUCTS & SOLUTIONS

In order to deliver better service for our customers with specified needs, in 2015, Sacer has divided products in two categories.

REMAN

Wholesale, order from stock, to electronic repair shop / remanufacturer

Instrument LCD displays

ABS / ECU / ECU repair spare parts

DC motor for throttle body

Automotive semiconductors

ODM

Small batch customer design service, for car parts distributor / remanufacturer

Turbo actuator

Contactless TPS sensor

ECU

Window regulator

EPS / EHPS control board

Air flow meter (MAF)

WHY SACER?

There are four reasons why Sacer will be your best choice.



Firstly, the Sacer R&D team knows the products and markets very well. We have more than 15 experienced engineers in the automotive electronics from domestic and oversea, making our products more close to local demands.



Secondly, a high qualified rate and intensive testing. All of our products passes the tests like automotive temperature range, aging, drop, vibration and salt spray. Each shipment will contain one inspection report. Sacer also passed ISO9001: in 2000 and 2015.





Thirdly, Sacer sets up a full adequate storage and logistics system, assuring shipping to customers timely. Each model has a certain quantity in stock for supply. Through our online shop you can always reach us, 24/7. Two warehouses guarantee fast shipping to our customers, our European warehouse in Germany and our Shenzhen warehouse in China.



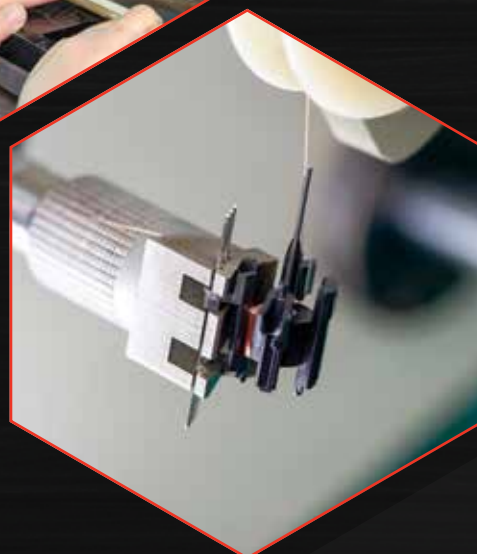
Fourthly, a small batch customized service is available. Sacer already establishes a full set of customizing processes.

The Sacer products are now performing a good quality in European and American automotive after-sales markets. More and more customers choose Sacer. We would like to express our gratitude here to our customers that are with us for such a long time and expect that more friends come to learn to know us as well.



INDEX CATALOGUE

1. DASHBOARDS / INSTRUMENT CLUSTERS	06 - 51
1.1 Special offer LCD pricing list	06 - 07
1.2 LCD display for instrument cluster	08 - 26
1.3 Ribbon flat cables for instrument cluster	27 - 34
1.4 Stepper motors for instrument cluster	35 - 43
1.5 Instrument cluster spare parts	44 - 45
1.6 Tungsten / LED bulbs	46 - 51
2. ABS / ECU / TPS REPAIR SPARE PARTS	52 - 60
2.1 Rh & Rt glass sensors for VDO ECU	52
2.2 Ignition control module for ECU repair	52
2.3 Replacement cap for ABS repair	53
2.4 DC motor	57
2.5 Solenoid valve for Compressor air suspension	59
3. AUTOMOTIVE SEMICONDUCTORS	61 - 62
3.1 IC Chips / Relay for ECU / Instrument Repair	61
4. PRECISE EQUIP & TOOLS FOR ELECTRONIC REPAIR	63 - 68
4.1 Heater bonding machine	63
4.2 Bonding fixture / JIGS	64
4.3 Bonding accessories	65
4.4 High resolution microscope	65
4.5 NANO Clips	66
4.6 Bit set	67
4.7 Wiring assistance kit test tool	67
4.8 UV EPROM eraser	67
4.9 DC socket	67



SPECIAL OFFER

LCD PRICING LIST

SA1226 - Audi Q7 (2004+) USD 104.10 \$88.47 (Qty 1+) - \$72.86 (Qty 10+)	SA1228 - BMW USD 20.22 \$17.29 (Qty 1+) - \$10.57 (Qty 10+)
SA1232 - Buick Century / Regal NHA 10331622 158k AT USD 37.17 \$31.60 (Qty 1+) - \$26.02 (Qty 10+)	SA1232-1 - Buick Century / Regal NHA 10331622 158k MT USD 37.17 \$31.60 (Qty 1+) - \$26.02 (Qty 10+)
SA1218 - Citroen C4 (2006-2008) USD 54.23 \$46.09 (Qty 1+) - \$37.96 (Qty 10+)	SA1209 (Petrol) - Citroen C4 (2008+) USD 54.23 \$46.09 (Qty 1+) - \$38.03 (Qty 10+)
FINAL CLEAR OUT!	SA1209-1 (Diesel) - Citroen C4 (2008+) USD 54.23 \$46.09 (Qty 1+) - \$38.03 (Qty 10+)
SA1206 - Citroen C5 / Xsara, Peugeot 307 USD 22.31 \$18.96 (Qty 1+) - \$15.61 (Qty 10+)	SA1201 - Citroen C5 / Xsara, Peugeot 307 USD 22.31 \$18.96 (Qty 1+) - \$15.61 (Qty 10+)
SA1223 - Citroen C5 (2009-2010) USD 37.17 \$31.60 (Qty 1+) - \$26.02 (Qty 10+)	SA1213 - Jaguar XJS / XJ6 300 series (1995-1998) USD 22.31 \$18.96 (Qty 1+) - \$15.61 (Qty 10+)
SA1009 - Lexus LS400 (1993-1994) USD 18.14 \$15.42 (Qty 1+) - \$12.70 (Qty 10+)	SA1010 - Lexus LS400 (1990-1992) USD 18.14 \$15.42 (Qty 1+) - \$12.70 (Qty 10+)
SA1011 - Lexus SC300, SC400 (1992-1996) USD 18.14 \$15.42 (Qty 1+) - \$12.70 (Qty 10+)	SA1005 - Mercedes E-Class (W210) / CLK-Class (W208) / SLK-Class (R170) USD 6.69 \$5.69 (Qty 1+) - \$4.68 (Qty 10+)

SA1006 - Mercedes E-Class (W210) / CLK-Class (W208) / SLK-Class (R170) USD 6.69 \$5.69 (Qty 1+) - \$4.68 (Qty 10+)	SA1012-1 - Mercedes C-class, AMG W203 (2000-2007) USD 18.59 \$15.80 (Qty 1+) - \$13.01 (Qty 10+)
SA1015 - Mercedes E-Class W210 USD 12.64 \$10.74 (Qty 1+) - \$8.85 (Qty 10+)	SA1202 - Opel Vectra B / Omega B / Zafira A (1999-2002) USD 66.91 \$56.88 (Qty 1+) - \$46.84 (Qty 10+)
SA1216 - Peugeot 308 USD 10.11 \$8.56 (Qty 1+) - \$7.05 (Qty 10+)	SA1224 - Peugeot 207 USD 22.31 \$18.96 (Qty 1+) - \$15.61 (Qty 10+)
SA1225 - Peugeot 207 USD 22.31 \$18.96 (Qty 1+) - \$15.61 (Qty 10+)	LCD DISPLAY SALE
SA1007 - Renault Laguna (<2001) USD 23.49 \$19.97 (Qty 1+) - \$16.45 (Qty 10+)	SA1205 - Renault Scenic 2 / Modus USD 22.31 \$18.96 (Qty 1+) - \$15.61 (Qty 10+)
SA1208 - Renault Scenic 2 / Modus USD 22.31 \$18.96 (Qty 1+) - \$15.61 (Qty 10+)	SA1001-2 - Saab 9-3 / 9-5 / SID1/2/3 (1998-2002) USD 14.87 \$12.64 (Qty 1+) - \$10.41 (Qty 10+)
SA1001-4 - Saab 9-3 / 9-5 / SID1/2/3 (1998-2002) USD 22.31 \$18.96 (Qty 1+) - \$15.61 (Qty 10+)	SA1002 - Saab 9-3 (<2003) USD 9.37 \$8.43 (Qty 1+) - \$7.50 (Qty 10+)
PROFIT NOW !	SA1013 - Seat Ibiza / Cordoba (1999-2002) USD 22.31 \$18.96 (Qty 1+) - \$15.61 (Qty 10+)
SA1017 - Seat Ibiza / Cordoba (1999-2002) USD 22.31 \$18.96 (Qty 1+) - \$15.61 (Qty 10+)	SA1014 - Seat Leon / Toledo (2000-2005) USD 12.64 \$10.74 (Qty 1+) - \$8.85 (Qty 10+)
SA1212 - Skoda Octavia (2004-2009), Golf V USD 52.04 \$44.24 (Qty 1+) - \$36.44 (Qty 10+)	SA1212-1 - Skoda Octavia (2004-2009), Golf V USD 52.04 \$44.24 (Qty 1+) - \$36.44 (Qty 10+)

LCD DISPLAY FOR INSTRUMENT CLUSTER

Sacer specializes in redesigning and manufacturing LCD display which apply on automotive instrument clusters. We can supply to you from the older monochrome character displays till the most high-tech TFT displays.

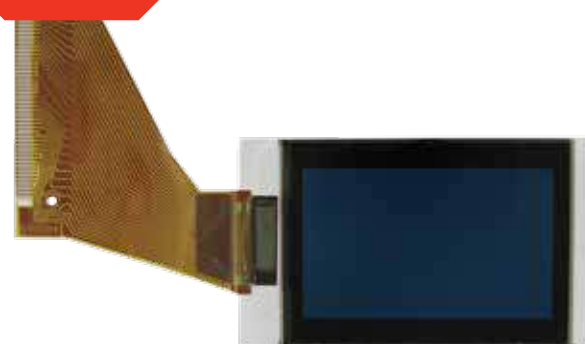
Audi A3 / A4 / A6 Jaeger (-2002) / TT Jaeger (-2005)

LCD half display with FPC

APPLICATION: Instrument cluster, dashboard

ADDITIONAL INFORMATION: Same IC driver as OE. Need to clean the PIN from PCB side first, before soldering. Recommend soldering skills. If you could remove the OE IC driver from display well for resoldering process, Sacer could provide LCD display with FPC separately for you. Normal soldering machine with very patient skills would be necessary. Difference between SA1003 & SA1018: Same LCD display with different shape of FPC connector, make / models are also different. Limited stock.

AVAILABLE



ORDERNR: SA1211

BRAND NEW

Audi A4 B6 / B7 (2002-2008)

LCD display with FPC

APPLICATION:
Monochrome center display

ADDITIONAL INFORMATION:
No need to solder.



ORDERNR: SA1230

BRAND NEW

Audi A6 (4F) (2004-2011) / Q7 (4L) (2006-)

LCD display only

APPLICATION:
ACC unit, with black cover (Model 2)

ADDITIONAL INFORMATION: Same as OE. Connect with zebra to the main PCB. There are two models for Audi A6/Q7 ACC unit. Please note SA1240 can not use on Model 1. We suggest you to replace the SA1240 from two sides together to get the same contrast.

NEW



ORDERNR: SA1240

BRAND NEW

Audi Q7 (2004+)

TFT navigation display

APPLICATION:
Instrument cluster, dashboard

ADDITIONAL INFORMATION:
Size: 4.2 inch, colorful TFT module brand new. Same as OE.



ORDERNR: SA1226

BRAND NEW

Audi, VW, Seat, Škoda, VDO cluster only (1999-2004) 4 pins

LCD display with FPC

APPLICATION: Instrument cluster, dashboard

MAKE / MODELS: Audi A3 / A4 / A6 (-2003), VW Passat / Golf 4 (-2003), Seat (-2004), Škoda (-2004) VDO Only

ADDITIONAL INFORMATION: COG LCD display with FPC cable. Soldering is not necessary. Total 34 pins from FPC side. For VDO only.



ORDERNR: SA1200

BRAND NEW

Audi, VW, Seat, Škoda, VDO cluster only (1999-2004) 26 pins

LCD display with FPC

APPLICATION:
Instrument cluster, dashboard

ADDITIONAL INFORMATION:
COG LCD display with FPC cable. Soldering not needed. Total 26 pins from FPC side. For VDO only. Same contrast with SA1200, only the pins are different.

NEW



ORDERNR: SA1200-1

BRAND NEW

Audi, Seat, Škoda, VW, VDO

LCD full display with FPC and IC driver

DEVELOPING



APPLICATION:

Instrument cluster, dashboard

MAKE / MODELS:

Audi A2 / A3 / A4 / A6 Jaeger (-2003) / TT Jaeger (-2005) / A2 / A6 VDO (-2004) / A3 / A4 VDO (-2003), Ford Galaxy (-2005), VW Golf IV / Passat / Bora / Sharan VDO (-2003) / Transporter T4 / T5 VDO (-2003), Seat Alhambra / Ibiza / Leon VDO (-2004), Škoda Fabia / Octavia VDO (-2004)

ADDITIONAL INFORMATION:

Same IC driver as OE. Need to clean the PIN from PCB side first, before soldering. Recommend soldering skills. If you could remove the OE IC driver from display well for resoldering process, Sacer could provide LCD display with FPC separately for you. Normal soldering machine with very patient skills would be necessary. Difference between SA1003 & SA1018: Same LCD display with different shape of FPC connector, make / models are also different. Limited stock.

ORDERNR: **SA1003**

BRAND NEW

Audi, Seat, Škoda, VW, VDO

LCD display with FPC and IC driver

NEW



APPLICATION:

Instrument Cluster / dashboard

MAKE / MODELS:

Audi A2 VDO / A3 VDO / A4 VDO / A6 VDO / TT Jaeger, Seat Alhambra / Ibiza / Leon (until 2004), Škoda Fabia / Octavia, Volkswagen Bora / Golf IV / Passat / Sharan / Transporter T4 and T5, Ford Galaxy (until 2005).

ADDITIONAL INFORMATION:

Same TAB IC driver as OE. Need to clean the PIN from PCB side before soldering. • Normal soldering machine with very patient skills would be necessary. • If you could remove the OE IC driver from display well for resoldering process, Sacer could provide LCD display with FPC separately for you. • Difference between SA1003-1 & SA1018: Same LCD display but **different shape of FPC connector**, compatible car models are also different. • 100% Brand New product and tested prior to leaving the factory.

ORDERNR: **SA1003-1**

BRAND NEW

Audi, Seat, Škoda, VW, VDO

LCD full display with FPC and IC driver

DEVELOPING



APPLICATION:

Instrument cluster, dashboard

MAKE / MODELS:

Audi A2 / A3 / A4 / A6 Jaeger (-2003) / TT Jaeger (-2005) / A2 / A6 VDO (-2004) / A3 / A4 VDO (-2003), Ford Galaxy (-2005), VW Golf IV / Passat / Bora / Sharan VDO (-2003) / Transporter T4 / T5 VDO (-2003), Seat Alhambra / Ibiza / Leon VDO (-2004), Škoda Fabia / Octavia VDO (-2004)

ADDITIONAL INFORMATION:

Same TAB IC driver as OE. Need to clean the PIN from PCB side first, before soldering. Recommend soldering skills. If you could remove the OE IC driver from display well for resoldering process, Sacer could provide LCD display with FPC separately for you. Normal soldering machine with very patient skills would be necessary. Difference between SA1003 & SA1018: Same LCD display with different shape of FPC connector, make / models are also different. Limited stock.

ORDERNR: **SA1018**

BRAND NEW

Audi, Seat, Škoda, VW, VDO

LCD display with FPC and IC driver

NEW



APPLICATION:

Instrument Cluster / dashboard

MAKE / MODELS:

Audi A3 / A4 / A6 / TT / Jaeger, Seat Alhambra / Ibiza / Leon VDO (-2004), Škoda Fabia / Octavia VDO (-2004), Volkswagen Bora / Golf IV / Passat / Sharan / Transporter T4 and T5 (-2003).

ADDITIONAL INFORMATION:

Same TAB IC driver as OE. Need to clean the PIN from PCB side before soldering. • Normal soldering machine with very patient skills would be necessary. • If you could remove the OE IC driver from display well for resoldering process, Sacer could provide LCD display with FPC separately for you. • Difference between SA1003-1 & SA1018: Same LCD display but **different shape of FPC connector**, compatible car models are also different. • 100% Brand New product and tested prior to leaving the factory.

ORDERNR: **SA1018-1**

BRAND NEW

BMW E53 (X5) / E38 (7-series) / E39 (5-series) (1995-2006) for MID display

LCD display with ribbon / flat cable

APPLICATION: MID radio display**MAKE / MODELS:** BMW 7-series: 740i / 740iL / 750i / 750iL / 760iL (1995-2001), 5-series: 528i / 525i / 530i / 540i / M5 (Sedan & Touring) (1996-2003), X5: 3.0 / 4.4 / 4.6is / 4.8 / X5M (2000-2006)**ADDITIONAL INFORMATION:** Need heat bonding to PCB, separately ribbon also available SA9016. SA1008 for dashboard, SA1228 for instrument middle information. **Mirror surface**, thickness = 2.12MM.ORDERNR: **SA1228**

BRAND NEW

BMW E53 (X5) / E38 (7-series) / E39 (5-series) (1995-2006) for MID display

LCD display with ribbon / flat cable

IMPROVED VERSION**APPLICATION:** MID Radio display**MAKE / MODELS:** BMW 7-series: 740i / 740iL / 750i / 750iL / 760iL (1995-2001), 5-series: 528i / 525i / 530i / 540i / M5 (Sedan & Touring) (1996-2003), X5: 3.0 / 4.4 / 4.6is / 4.8 / X5M (2000-2006)**ADDITIONAL INFORMATION:** Need heat bonding to PCB, separately ribbon also available SA9016. SA1008 for dashboard, SA1228 for instrument middle information. **Frosted surface**, thickness = 2.71MM.ORDERNR: **SA1228-1**

BRAND NEW

BMW E53 (X5) / E38 (7-series) / E39 (5-series) (-2003) for instrument cluster

LCD display with ribbon / flat cable

APPLICATION:

Instrument cluster, dashboard

ADDITIONAL INFORMATION:Need heat bonding to PCB side, separately ribbon also available SA9015. **SA1008 for dashboard**, SA1228 for instrument middle information.ORDERNR: **SA1008**

BRAND NEW

Buick Century / Regal NHA 10331622 158k AT

LCD display with soldering pins

APPLICATION:

Instrument cluster, dashboard

ADDITIONAL INFORMATION:**28 Pins** (DIP) soldering needed. (AT) Automatic Transmission. Additional accessory: 120ohm resistor X 4pcs for each LCD.ORDERNR: **SA1232**

BRAND NEW

Buick Century / Regal NHA 10331622 158k MT

LCD display with soldering pins

APPLICATION:

Instrument cluster, dashboard

ADDITIONAL INFORMATION:**32 Pins** (DIP) soldering needed. (MT) Manual Transmission. Additional accessory: 120ohm resistor X 4pcs for each LCD.ORDERNR: **SA1232-1**

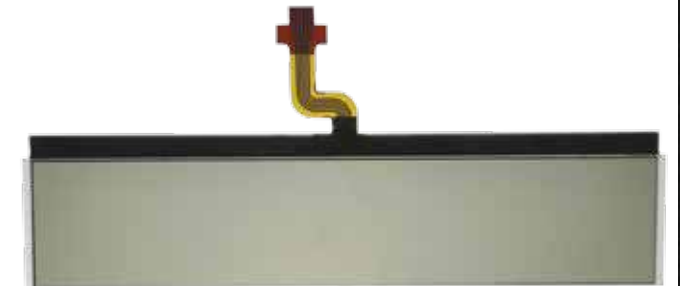
BRAND NEW

Citroën C4 (2006-2008) (petrol version)

LCD display with FPC

APPLICATION:

Middle speed RPM information (long RPM scale)

ADDITIONAL INFORMATION:STN LCD display with FPC. Soldering is not necessary. Difference between SA1209 & SA1218: contrast is different. SA1209 for new models, **SA1218 for old models**.ORDERNR: **SA1218**

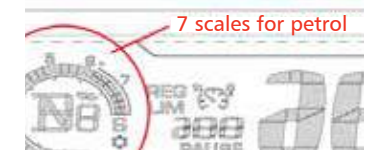
BRAND NEW

Citroën C4 (2008+) (petrol version)

LCD display with FPC

APPLICATION:

Middle speed RPM information (round RPM scale)

ADDITIONAL INFORMATION:STN LCD display with FPC. Soldering is not necessary. Difference between SA1209 & SA1218: contrast is different. **SA1209 for new models**, SA1218 for old models.ORDERNR: **SA1209**

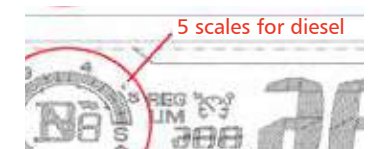
BRAND NEW

Citroën C4 (2008+) Diesel

LCD display with FPC

APPLICATION:

Middle speed RPM information (round RPM scale)

ADDITIONAL INFORMATION:STN LCD display with FPC. Soldering is not necessary. Difference between SA1209 & SA1209-1: SA1209 for petrol (7 scales on oil meter), **SA1209-1 for diesel** (5 scales on oil meter).ORDERNR: **SA1209-1**

BRAND NEW

Citroën C4

LCD display only (yellow background)

APPLICATION:

ACC information (yellow background)

ADDITIONAL INFORMATION:

Without any cable, need to connect with zebra to the main PCB at customer side.



ORDERNR: SA1225

BRAND NEW

Citroën C3 / C4 / C5

LCD display with outer cover

OUT OF STOCK

APPLICATION:

Graphic information display

ADDITIONAL INFORMATION:

SA1237 orange background. Calibration need to be done at customer side.



ORDERNR: SA1237

BRAND NEW

Citroën C5 / Xsara

LCD display with green ribbon / flat cable (light background)

APPLICATION:

ACC unit (dark background)

ADDITIONAL INFORMATION:

LCD display with ribbon cables. Same character with SA1201. Separated ribbon also available SA9023.



ORDERNR: SA1206

BRAND NEW

Citroën C5

TFT navigation display

APPLICATION:

Navigation display

ADDITIONAL INFORMATION:

Size: 7 inch. colorful TFT module important part no. LB070WV1TD4 brand new. Same as OE.



ORDERNR: SA1223

BRAND NEW

Citroën C4 / C5 new generation / 3008

NEW

TFT navigation display

APPLICATION:

Navigation display

ADDITIONAL INFORMATION:

7 inch. LG LA070WV4(SD)(03) with LED backlight.



ORDERNR: SA1238

BRAND NEW

DAF LF (2001-) / XF 105 (2002-) / XF 95 (2003-) (truck)

NEW

LCD display with FPC

APPLICATION:

Instrument cluster

ADDITIONAL INFORMATION:

Dimension of glass: 119.01 X 96.00mm



ORDERNR: SA1243

BRAND NEW

IVECO Stralis (2002-2006)

NEW

TFT navigation display

APPLICATION:

Instrument cluster display

ADDITIONAL INFORMATION:

7 inch TOSHIBA OE No TFD50W52MS3



ORDERNR: SA1244

BRAND NEW

Jaguar XJS / XJ6 / 300-series (1995-1998)

LCD display with ribbon / flat cable

APPLICATION:

Time information

ADDITIONAL INFORMATION:

Need heat bonding machine to amount on PCB.



ORDERNR: SA1213

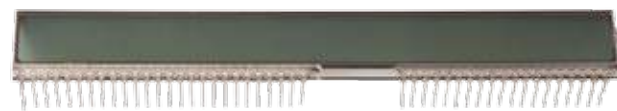
BRAND NEW

Lexus LS400 (1990-1992) For left hand driving

LCD display with soldering pins

APPLICATION:
ACC display

ADDITIONAL INFORMATION:
Need to soldering on PCB. For left hand driving.



ORDERNR: **SA1010**

BRAND NEW

Lexus LS400 (1993-1994) For left hand driving

LCD display with soldering pins

APPLICATION:
ACC display

ADDITIONAL INFORMATION:
Need to soldering on PCB. For left hand driving.



ORDERNR: **SA1009**

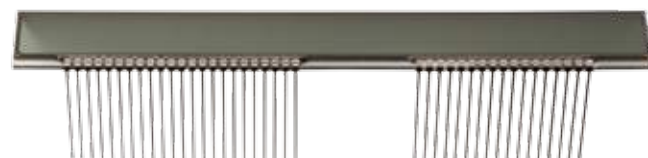
BRAND NEW

Lexus SC300 / SC400 (1992-1996) For left hand driving

LCD display with soldering pins

APPLICATION:
Instrument cluster, dashboard

ADDITIONAL INFORMATION:
Need to soldering on PCB. For left hand driving.



ORDERNR: **SA1011**

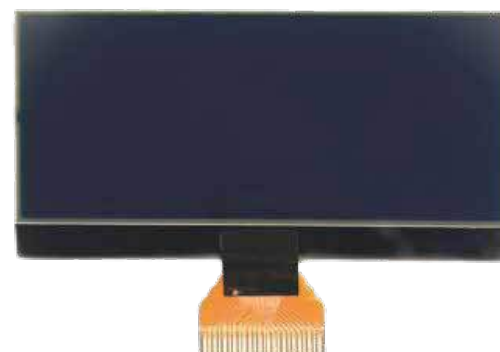
BRAND NEW

Mercedes A / B-Class (2004+)

LCD display with FPC 7V

APPLICATION:
Instrument cluster, dashboard 7V

ADDITIONAL INFORMATION:
COG LCD display with FPC. Soldering is not necessary. Difference between SA1214 & SA1215 is input Volt only. Will effect contrast a little bit.



ORDERNR: **SA1214**

BRAND NEW

Mercedes A / B-Class (2004+)

LCD display with FPC 8V

APPLICATION:
Instrument cluster, dashboard 8V

ADDITIONAL INFORMATION:
COG LCD display with FPC. Soldering is not necessary. Difference between SA1214 & SA1215 is input Volt only. Will effect contrast a little bit.



ORDERNR: **SA1215**

BRAND NEW

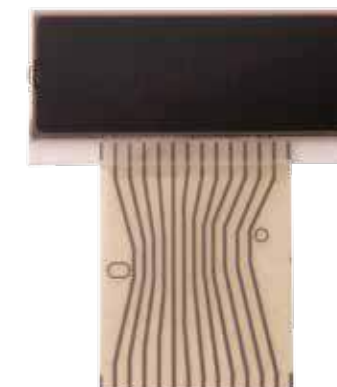
Mercedes C / E / CLK / SLK-Class (1998-2002)

LCD display with ribbon flat cable (left)

APPLICATION: Instrument cluster, dashboard (left)

MAKE / MODELS: Mercedes C-Class (W202) / E-Class (W210) / CLK-Class (W208) / SLK-Class (R170)

ADDITIONAL INFORMATION: 12 pins on flat cable side with 2 position holes. Need heat bonding. Change both left and right to get same contrast. Seperate flat cable is also available for sale.



ORDERNR: **SA1005**

BRAND NEW

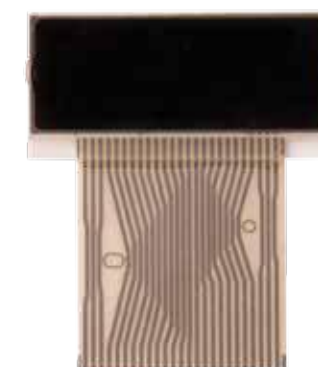
Mercedes C / E / CLK / SLK-Class (1998-2002)

LCD display with ribbon flat cable (right)

APPLICATION: Instrument cluster, dashboard (right)

MAKE / MODELS: Mercedes C-Class (W202) / E-Class (W210) / CLK-Class (W208) / SLK-Class (R170)

ADDITIONAL INFORMATION: 25 pins on flat cable side with 2 position holes. Need heat bonding. Change both left and right to get same contrast. Seperate flat cable is also available for sale.



ORDERNR: **SA1006**

BRAND NEW

Mercedes C-Class / AMG W203 (2000-2007)

LCD display with FPC

APPLICATION:
Instrument cluster, dashboard

ADDITIONAL INFORMATION:
Same IC Driver with OE. Soldering is not necessary.



ORDERNR: **SA1012**

BRAND NEW

Mercedes C-Class / AMG W203 (2000-2007)

LCD display with FPC (need calibrate the driving voltages sometimes)

APPLICATION:
Instrument cluster, dashboard

ADDITIONAL INFORMATION:
Same IC Driver with OE. Soldering is not necessary. Need to calibrate the resistor on main board to get ideal contrast. Price is 50% from SA1012!

PROMOTION
PRICE 50% OFF



ORDERNR: SA1012-1

BRAND NEW

Mercedes E-Class W210 (1996-2001)

LCD display with soldering pins

APPLICATION:
ACC unit (climate control)

ADDITIONAL INFORMATION:
STN LCD display with pins. Need to soldering on PCB. For left hand driving.



ORDERNR: SA1015

BRAND NEW

Mercedes Viano / Vito / Sprinter (2004+)

LCD display with FPC

APPLICATION:
Instrument cluster, dashboard

ADDITIONAL INFORMATION:
COG LCD display with FPC cable.

AVAILABLE



ORDERNR: SA1207

BRAND NEW

Nissan T31 X-trail / Qashqai (2007-2009)

LCD display with FPC

APPLICATION:
Instrument cluster, dashboard

ADDITIONAL INFORMATION:
Soldering is not necessary.



ORDERNR: SA1231

BRAND NEW

Opel Vectra B / Omega B / Zafira A (1999-2002)

LCD display with two flat cables

APPLICATION:
Information center

ADDITIONAL INFORMATION:
LCD display with two ribbon flat cables. Separated ribbon also available SA9021, SA9022.



ORDERNR: SA1202

BRAND NEW

Peugeot 207 / 307 / 407

LCD display with outer cover

APPLICATION:
Graphic information display

ADDITIONAL INFORMATION:
SA1237-1 red background. Calibration need to be done at customer side.



OUT OF STOCK

ORDERNR: SA1237-1

BRAND NEW

Peugeot 207

LCD display only (red background)

APPLICATION:
ACC information (red background)

ADDITIONAL INFORMATION:
Without any cable, need to connect with zebra to the main PCB at customer side.



ORDERNR: SA1224

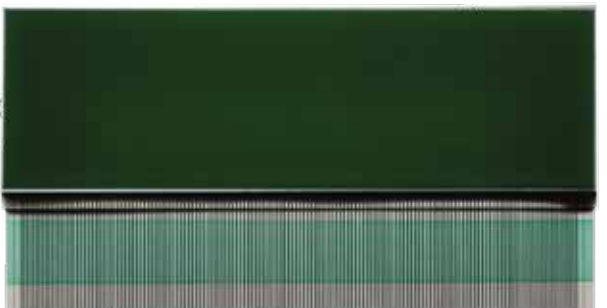
BRAND NEW

Peugeot 307

LCD display with green ribbon / flat cable (light background)

APPLICATION:
ACC unit (light background)

ADDITIONAL INFORMATION:
LCD display with ribbon cables. Same character with SA1206. Separated ribbon also available SA9023.



ORDERNR: SA1201

BRAND NEW

Peugeot 308

LCD display only

APPLICATION:

ACC unit (left & right is the same)

ADDITIONAL INFORMATION:

Without any cable, need to connect with zebra to the main PCB at customer side. Preferable to change two sides at the same time, to get the same contrast.

Difference between SA1241 & SA1216:

SA1241: Dimension 37.00 X 27.00 MM, PIN = 9.

SA1216: Dimension 35.40 X 26.60 MM, PIN = 10.



ORDERNR: **SA1216**

BRAND NEW

Peugeot 407

LCD display with FPC

PROMOTION
PRICE 20% OFF

APPLICATION:

Instrument cluster, dashboard

ADDITIONAL INFORMATION:

Soldering is not necessary. This SA1004 is for Peugeot 407 only. Limited stock.



ORDERNR: **SA1004**

BRAND NEW

Peugeot 3008 / 5008

LCD display only

NEW

APPLICATION:

ACC unit

ADDITIONAL INFORMATION:

Without any cable, need to connect with zebra to the main PCB at customer side. Preferable to change two sides at the same time, to get the same contrast.

Difference between SA1241 & SA1216:

SA1241: Dimension 37.00 X 27.00 MM, PIN = 9.

SA1216: Dimension 35.40 X 26.60 MM, PIN = 10.



ORDERNR: **SA1241**

BRAND NEW

Peugeot 3008 / 5008

TFT navigation display

NEW

APPLICATION:

Navigation display

ADDITIONAL INFORMATION:

7 inch TOSHIBA OE No.LT070CA04300



ORDERNR: **SA1239**

BRAND NEW

Porsche 911 996 (1998-2005)

LCD display with ribbon / flat cable

NEW

APPLICATION:

Instrument cluster, dashboard (left)

ADDITIONAL INFORMATION:

Need heat bonding to PCB separately ribbon is available SA9036-1. Prefer to change SA1234, SA1235, SA1236 together to get the same contrast.



ORDERNR: **SA1234**

BRAND NEW

Porsche 911 996 (1998-2005)

LCD display with ribbon / flat cable

NEW

APPLICATION:

Instrument cluster, dashboard (middle)

ADDITIONAL INFORMATION:

Need heat bonding to PCB separately ribbon is available SA9036-2. Prefer to change SA1234, SA1235, SA1236 together to get the same contrast.



ORDERNR: **SA1235**

BRAND NEW

Porsche 911 996 (1998-2005)

LCD display with ribbon / flat cable

NEW

APPLICATION:

Instrument cluster, dashboard (right)

ADDITIONAL INFORMATION:

Need heat bonding to PCB separately ribbon is available SA9036-3. Prefer to change SA1234, SA1235, SA1236 together to get the same contrast.



ORDERNR: **SA1236**

BRAND NEW

Porsche Cayenne / Cayenne S (2003-2009), VW Touareg V6 (2004-2007)

LCD display with FPC USA model yellow background

APPLICATION:

Non turbo dashboard, monochrome center display

ADDITIONAL INFORMATION:

SA1229: yellow background. SA1229-1: red background.



ORDERNR: **SA1229**

BRAND NEW

Porsche Cayenne / Cayenne S (2003-2009), VW Touareg V6 (2004-2007)

LCD display with FPC red background

APPLICATION:

Non turbo dashboard, monochrome center display from instrument cluster

ADDITIONAL INFORMATION:

SA1229: yellow background. SA1229-1: red background.



ORDERNR: SA1229-1

BRAND NEW

Range Rover (-2003)

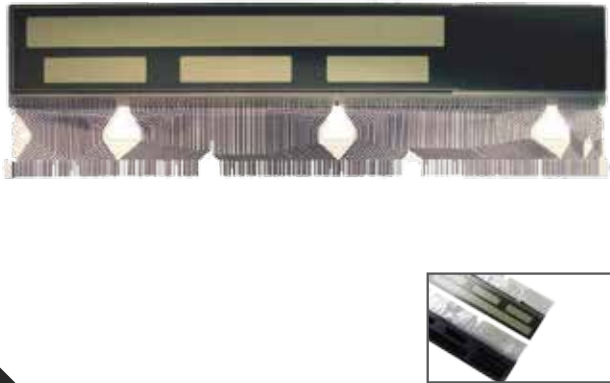
LCD display with ribbon / flat cable

APPLICATION:

Instrument cluster, dashboard

ADDITIONAL INFORMATION:

Need heat bonding to PCB side, separately ribbon also available SA9016. Note: this display can only apply for Range Rover. Can not use for BMW. Separate ribbon SA9016 can use for BMW and Range Rover.



ORDERNR: SA1217

BRAND NEW

Renault Laguna (-2001)

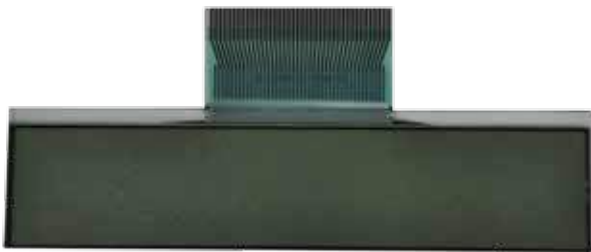
LCD display with ribbon / flat cable

APPLICATION:

ACC unit

ADDITIONAL INFORMATION:

Need heat bonding to PCB side.



ORDERNR: SA1007

BRAND NEW

Renault Scénic 2 / Modus

LCD display only 5V

APPLICATION:

ACC display

ADDITIONAL INFORMATION:

Without any cable, need to connect with zebra to the main PCB. SA1205: 5V, SA1208: 3V.



ORDERNR: SA1205

BRAND NEW

Renault Scénic 2 / Modus

LCD display only 8V

APPLICATION:

Megane system (sound speaker)

ADDITIONAL INFORMATION:

Without any cable, need to connect with zebra to the main PCB. SA1205: 5V, SA1208: 3V.



ORDERNR: SA1208

BRAND NEW

Renault Twingo II (2007-2012)

LCD display with ribbon / flat cable

APPLICATION:

Instrument cluster

ADDITIONAL INFORMATION:

LCD display with ribbon cable, need heat bonding to PCB. OE NO. 8200725330, A2C53220491, 8200833490, 8200725329, 8200833493, 8200387578, 8200495613, 8200965920, 8200960911, 8201178273R, 8200934876, 82007253301, A2C53220491, A2C53332428, A2C53124435, A2C53308905, A2C53332452 machine to amount on PCB, separately ribbon also available SA9016.



ORDERNR: SA1227

BRAND NEW

Saab 9-3 / 9-5 / SID1 / SID2 / SID3 (1998-2002)

LCD display with silver ribbon / flat cable

APPLICATION:

Information center

ADDITIONAL INFORMATION:

Need heat bonding machine to amount on PCB.



ORDERNR: SA1001

BRAND NEW

Saab 9-3 / 9-5 / SID1 / SID2 / SID3 (1998-2002)

LCD display with green ribbon / flat cable. Budget version.

APPLICATION:

Information center

ADDITIONAL INFORMATION:

Need heat bonding machine to amount on PCB. A little bit red in contrast. Price is 70% from SA1001.



PROMOTION
PRICE 20% OFF

ORDERNR: SA1001-2

BRAND NEW

Saab 9-3 / 9-5 / SID1 / SID2 / SID3 (1998-2002)

LCD display without flat cable

APPLICATION:
Information center

ADDITIONAL INFORMATION:
LCD glass only. Customer may want to glue heatseal at customer side.



ORDERNR: SA1001-3 BRAND NEW

Saab 9-3 / 9-5 / SID1 / SID2 / SID3 (1998-2002)

LCD display with FPC & connector. Budget version.

APPLICATION:
Information center

ADDITIONAL INFORMATION:
Need heat bonding machine to amount on PCB. Heatseal is thinner than SA1001, easy to bonding, carbon track. Same contrast as SA1001.



ORDERNR: SA1001-4 BRAND NEW

Saab 9-3 (1998-2003)

LCD display with FPC & connector

APPLICATION:
ACC unit

ADDITIONAL INFORMATION:
OE was LCD display with flat cable, which caused it break after years. Sacer improve it with FPC connector. Easy soldering process and longer life time.

Length of FPC: SA1002 = 47MM same as OE flat.

PROMOTION
PRICE 20% OFF



ORDERNR: SA1002 BRAND NEW

Saab 9-3 (1998-2003)

LCD display with FPC & connector

APPLICATION:
ACC unit

ADDITIONAL INFORMATION:
OE was LCD display with flat cable, which caused it break after years. Sacer improve it with longer FPC connector. Easy soldering process and longer life time.



ORDERNR: SA1002-1 BRAND NEW

Seat Altea 5P1, 5P5, 5P8 (2004-2009) / Altea XL (2006-2009) / Leon 1P1 (2005-2009) / Toledo 5P2 (2005-2009)

NEW

LCD display with FPC

APPLICATION:
Instrument cluster, dashboard

ADDITIONAL INFORMATION:
Please note there are several models for Seat Leon, Identify information is the dimension of glass: 57.60 X 97.00 mm



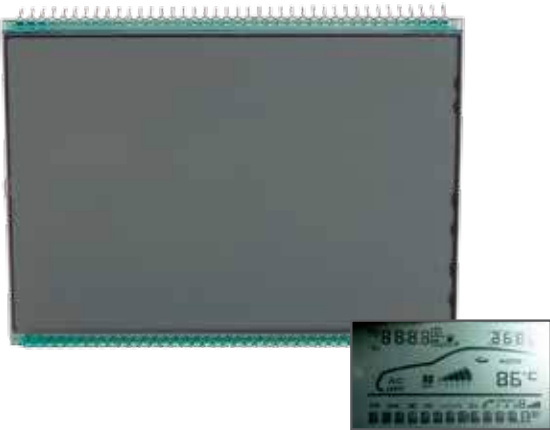
ORDERNR: SA1242 BRAND NEW

Seat Ibiza / Cordoba (1999-2002)

LCD display with soldering pins model 1

APPLICATION:
Radio and ACC display model 1

ADDITIONAL INFORMATION:
Need to soldering on PCB. Different character with SA1017.



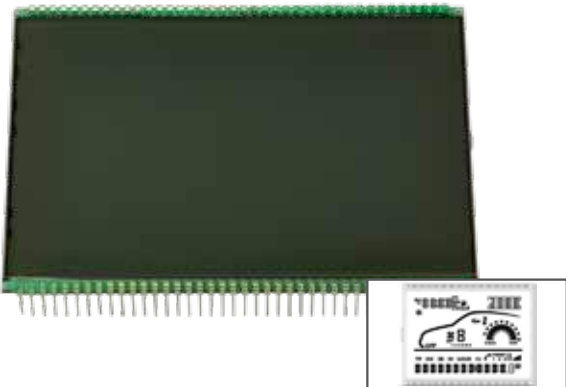
ORDERNR: SA1013 BRAND NEW

Seat Ibiza / Cordoba (1999-2002)

LCD display with soldering pins model 2

APPLICATION:
Radio and ACC unit model 2

ADDITIONAL INFORMATION:
Need to soldering on PCB. Different character with SA1013.



ORDERNR: SA1017 BRAND NEW

Seat Leon / Toledo (2000-2005)

LCD display only

APPLICATION:
ACC unit

ADDITIONAL INFORMATION:
Without any cable, need to connect with zebra to the main PCB.



ORDERNR: SA1014 BRAND NEW

Škoda Octavia (2004-2009)

LCD display with two FPC (blue background)

APPLICATION:
VAG instrument cluster

ADDITIONAL INFORMATION:
Two kind of background contrast are available: SA1212: blue background contrast. SA1212-1: black background contrast. Customer need to choose for different application. Attention: this LCD has two connectors.



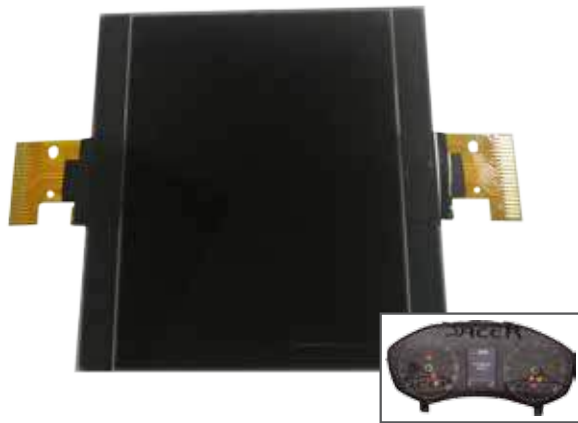
ORDERNR: **SA1212** | BRAND NEW

Škoda Octavia (2004-2009)

LCD display with two FPC (black background)

APPLICATION:
VAG instrument cluster

ADDITIONAL INFORMATION:
Two kind of background contrast are available: SA1212: blue background contrast. SA1212-1: black background contrast. Customer need to choose for different application. Attention: this LCD has two connectors.



ORDERNR: **SA1212-1** | BRAND NEW



RIBBON FLAT CABLE FOR INSTRUMENT CLUSTER

Ribbon Flat Cables came in several quality levels. We at Sacer understand the loss of time if a bonding doesn't work perfect in the first attempt. The Sacer flat cables are self-sticking for easy assembly.

Audi A6, S6, allroad (4F) (2004-2011) / Q7 (4L) (2006+)

NEW

Ribbon cables / connector

APPLICATION: ACC unit

ADDITIONAL INFORMATION:
2 models but same contrast on this ACC unit. Model 1: LCD + Ribbon, need bonding. (Grey housing); Model 2: LCD only, without Ribbon, need Zebra to connect. (Black color plastic housing); SA9038 can only apply on model 1. Need to bonding on LCD and PCB. 2pcs on 1 ACC unit. Sacer also develop LCD for model 2.



ORDERNR: **SA9038** | BRAND NEW

BMW 3-series E36 ribbon cables

Ribbon cables / connector

APPLICATION:
Dashboard

ADDITIONAL INFORMATION:
Heatseal to connect LCD and PCB.



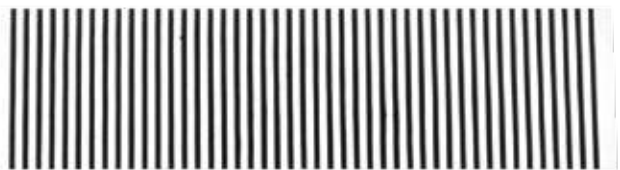
ORDERNR: **SA9035** | BRAND NEW

BMW E34 (-1996)

Ribbon cables / connector

APPLICATION:
Instrument cluster, display

ADDITIONAL INFORMATION:
Heatseal to connect LCD and PCB.



ORDERNR: **SA9018** | BRAND NEW

BMW E36

Ribbon cables / connector

APPLICATION:
ACC display



ORDERNR: SA9030

BRAND NEW

BMW E53 (X5) / E38 (7-series) / E39 (5-series), Range Rover

Ribbon cables / connector

APPLICATION:
Instrument cluster, display

ADDITIONAL INFORMATION:
Heatseal to connect LCD and PCB.



ORDERNR: SA9015

BRAND NEW

BMW E53 (X5) / E38 (7-series) / E39 (5-series), Range Rover

Ribbon cables / connector

APPLICATION:
MID radio display

ADDITIONAL INFORMATION:
Heatseal to connect LCD and PCB.



ORDERNR: SA9016

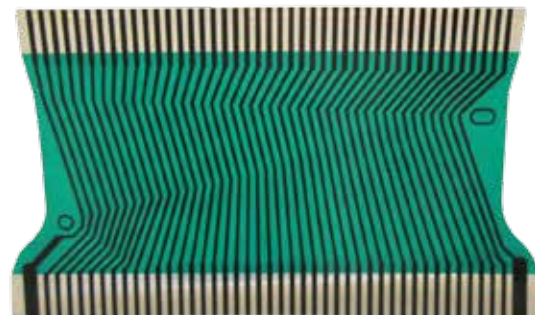
BRAND NEW

Citroën C3 (2009+) / DS3 (2009-2014)

Ribbon cables / connector

APPLICATION:
Instrument cluster (right display)

ADDITIONAL INFORMATION:
Heatseal to connect LCD and PCB. Need to bonding on PCB and LCD, 2MM longer than OE.



ORDERNR: SA9037

BRAND NEW

Citroën C5 / Xsara, Peugeot 307 / 407

Ribbon cables / connector

APPLICATION:
ACC display

ADDITIONAL INFORMATION:
Heatseal to connect LCD and PCB. Apply for SA1201. Different pin & pitch with SA9023.



ORDERNR: SA9008

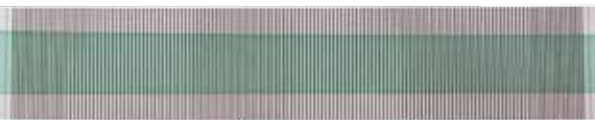
BRAND NEW

Citroën C5 / Xsara, Peugeot 307 / 407

Ribbon cables / connector

APPLICATION:
ACC display

ADDITIONAL INFORMATION:
Heatseal to connect LCD and PCB. Apply for SA1206. Different pin & pitch with SA9008.



ORDERNR: SA9023

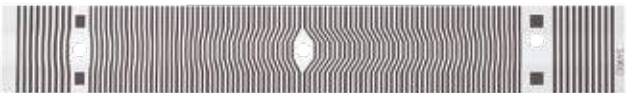
BRAND NEW

Citroën X

Ribbon cables / connector

APPLICATION:
Left info display

ADDITIONAL INFORMATION:
Heatseal to connect LCD and PCB.



ORDERNR: SA9013

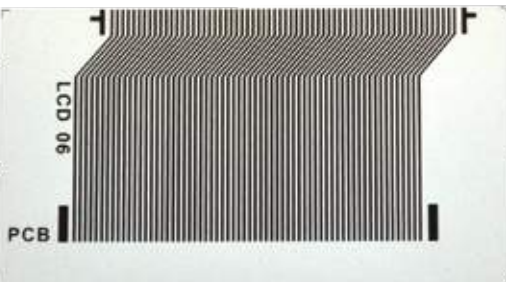
BRAND NEW

Flat cable to connect LCD and PCB

Ribbon cables / connector

APPLICATION:
Info display

ADDITIONAL INFORMATION:
Heatseal to connect LCD and PCB.



ORDERNR: SA9014

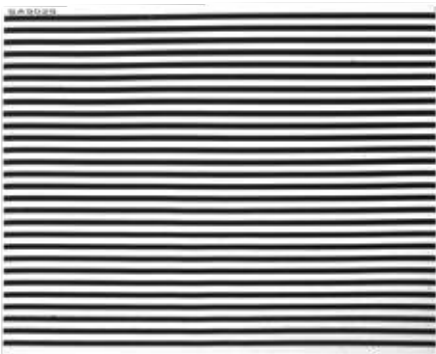
BRAND NEW

Jaguar XJS / XJ6 / 300-series

Ribbon cables / connector

APPLICATION:
Information display

ADDITIONAL INFORMATION:
Heatseal to connect LCD and IC driver.



ORDERNR: **SA9026**

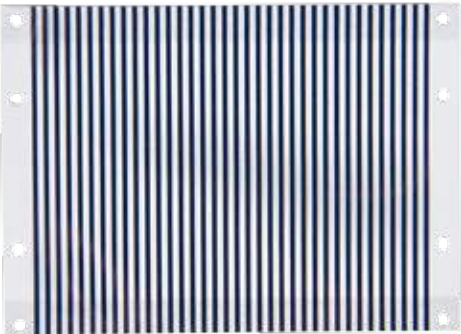
BRAND NEW

John Deere tractor

Ribbon cables / connector

APPLICATION:
Dashboard

ADDITIONAL INFORMATION:
Heatseal to connect LCD and PCB.



ORDERNR: **SA9034**

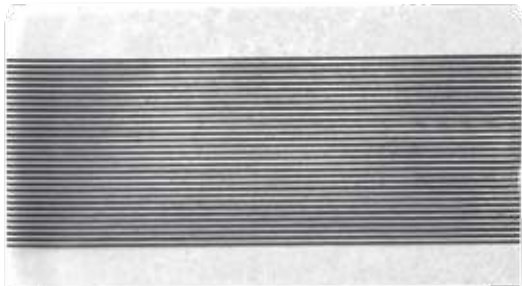
BRAND NEW

Mercedes A-Class

Ribbon cables / connector

APPLICATION:
Instrument cluster, display

ADDITIONAL INFORMATION:
Heatseal to connect LCD and PCB.



ORDERNR: **SA9002**

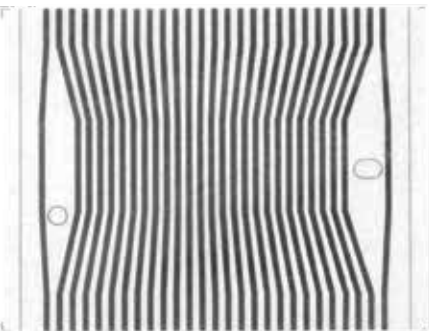
BRAND NEW

Mercedes C / E-Class

Ribbon cables / connector

APPLICATION:
Instrument cluster, display

ADDITIONAL INFORMATION:
Heatseal to connect LCD and PCB.



ORDERNR: **SA9005**

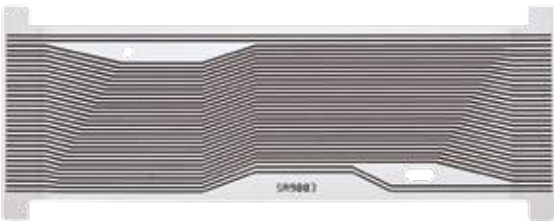
BRAND NEW

Mercedes Viano

Ribbon cables / connector

APPLICATION:
Instrument cluster, display

ADDITIONAL INFORMATION:
Heatseal to connect LCD and PCB.



ORDERNR: **SA9003**

BRAND NEW

Mercedes W210 / W208 / W463

Ribbon cables / connector

APPLICATION:
Instrument cluster, display

ADDITIONAL INFORMATION:
Heatseal to connect LCD and PCB.



ORDERNR: **SA9017**

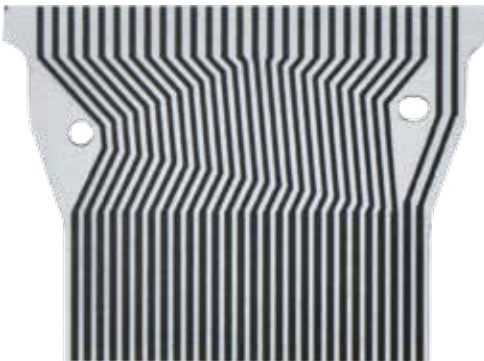
BRAND NEW

Nissan Quest

Ribbon cables / connector

APPLICATION:
Dashboard

ADDITIONAL INFORMATION:
Heatseal to connect LCD and PCB.



ORDERNR: **SA9031**

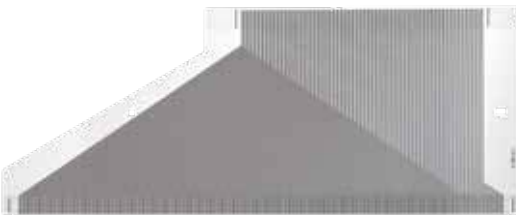
BRAND NEW

Opel Astra

Ribbon cables / connector

APPLICATION:
Information display

ADDITIONAL INFORMATION:
Heatseal to connect LCD and IC driver.



ORDERNR: **SA9024**

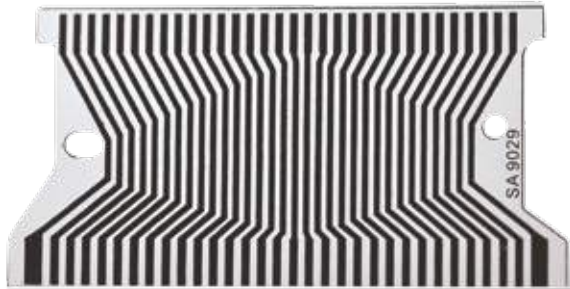
BRAND NEW

Opel Astra / Zafira

Ribbon cables / connector

APPLICATION:
Instrument cluster, display

ADDITIONAL INFORMATION:
Heatseal to connect LCD and IC driver.



ORDERNR: **SA9029**

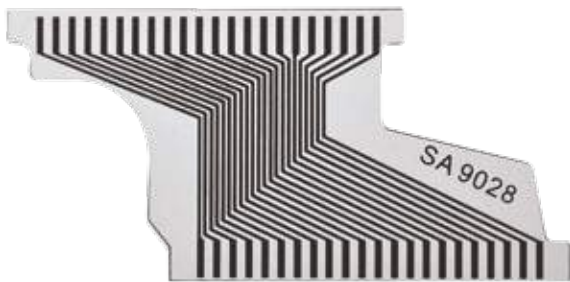
BRAND NEW

Opel Corsa / Meriva

Ribbon cables / connector

APPLICATION:
Instrument cluster, display

ADDITIONAL INFORMATION:
Heatseal to connect LCD and IC driver.



ORDERNR: **SA9028**

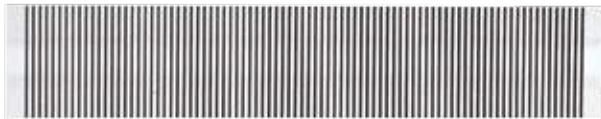
BRAND NEW

Opel Vectra B / Omega B / Zafira A

Ribbon cables / connector

APPLICATION:
Short cable for info center display

ADDITIONAL INFORMATION:
Heatseal to connect LCD and PCB.



ORDERNR: **SA9021**

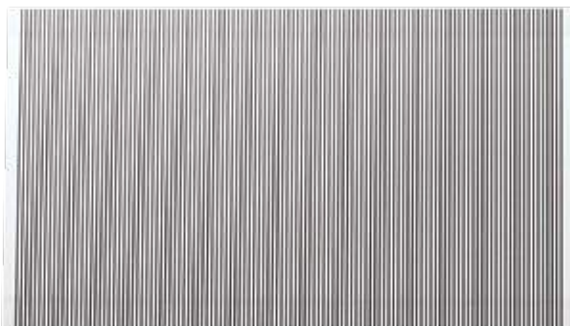
BRAND NEW

Opel Vectra B / Omega B / Zafira A

Ribbon cables / connector

APPLICATION:
Long connector for info center display

ADDITIONAL INFORMATION:
Heatseal to connect LCD and PCB.



ORDERNR: **SA9022**

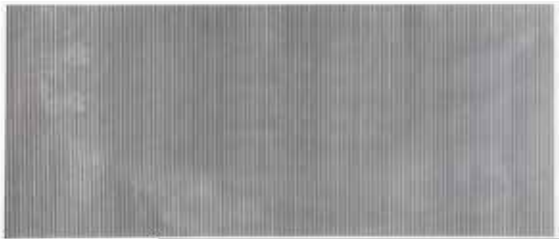
BRAND NEW

Opel, GM, Vauxhall "full"

Ribbon cables / connector

APPLICATION:
Info display

ADDITIONAL INFORMATION:
Heatseal to connect LCD and PCB.



ORDERNR: **SA9001**

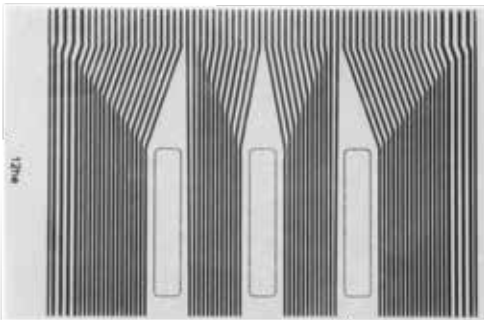
BRAND NEW

Opel, GM, Vauxhall

Ribbon cables / connector

APPLICATION:
Info display

ADDITIONAL INFORMATION:
Heatseal to connect LCD and PCB.



ORDERNR: **SA9012**

BRAND NEW

Peugeot 206, Fiat Ulysse

Ribbon cables / connector

APPLICATION:
Instrument cluster, display

ADDITIONAL INFORMATION:
Heatseal to connect LCD and PCB.



ORDERNR: **SA9004**

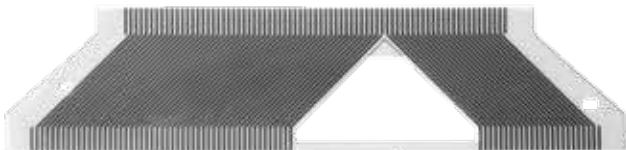
BRAND NEW

Peugeot 206

Ribbon cables / connector

APPLICATION:
Info display

ADDITIONAL INFORMATION:
Heatseal to connect LCD and PCB.



ORDERNR: **SA9009**

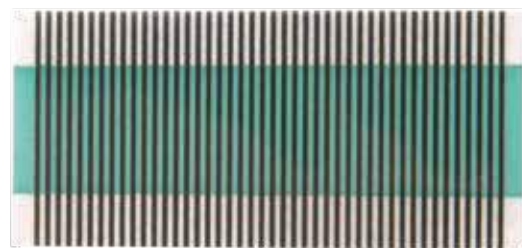
BRAND NEW

Peugeot 406

Ribbon cables / connector

APPLICATION:
Info display

ADDITIONAL INFORMATION:
Heatseal to connect LCD and PCB.



ORDERNR: **SA9010**

BRAND NEW

Saab 9-5

Ribbon cables / connector

APPLICATION:
ACC display

ADDITIONAL INFORMATION:
Heatseal to connect LCD and PCB.



ORDERNR: **SA9006**

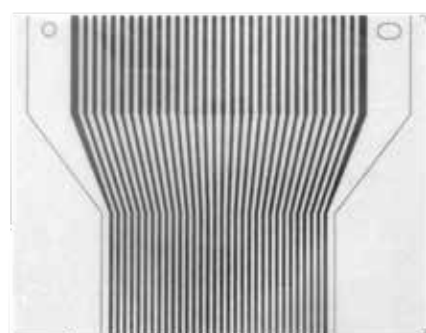
BRAND NEW

VW Fox

Ribbon cables / connector

APPLICATION:
Instrument cluster, display

ADDITIONAL INFORMATION:
Heatseal to connect LCD and PCB.



ORDERNR: **SA9007**

BRAND NEW

VW Golf

Ribbon cables / connector

APPLICATION:
Instrument cluster, display

ADDITIONAL INFORMATION:
Heatseal to connect LCD and IC driver.



ORDERNR: **SA9019**

BRAND NEW

STEPPER MOTOR FOR INSTRUMENT CLUSTER

The instrument clusters have quite some movable parts that can break because of friction. Many of them could be glued during the rebuilding process, but this is mostly only a temporary option. Therefore Sacer has designed and produces these parts for you, for the moment when these parts are not available from the OE / OEM producers. The design and assembly from all these parts is done 'in house', so that we are able to control quality correctly. From gearwheels, pointer motors, high voltage trafo's till micro switches and miniature light bulbs.

Audi A4 / A5 / A6 (2007-2011)

Stepper motor

APPLICATION:
Instrument cluster, dashboard

ADDITIONAL INFORMATION:
Mental shaft, soldering needed. Same function as SA1060.



ORDERNR: **SA1059**

BRAND NEW

Audi A6, VW old Bora Jetta / Jetta King / Passat B5, Seat, Škoda 91.255.008

Stepper motor

APPLICATION:
Instrument cluster, dashboard

ADDITIONAL INFORMATION:
For VDO dashboard, can not exchange with other number. Long shaft.



ORDERNR: **SA1070**

BRAND NEW

Audi A6, VW old Bora Jetta / Jette King / Passat B5, Seat, Škoda 91.255.012

Stepper motor

APPLICATION:
Instrument cluster, dashboard

ADDITIONAL INFORMATION:
For VDO dashboard. Long shaft with black line. Can not exchange with other number.



ORDERNR: **SA1070-1**

BRAND NEW

Audi A6, VW old Bora Jetta / Jette King / Passat B5, Seat, Škoda 91.255.002

Stepper motor

APPLICATION:

Instrument cluster, dashboard

ADDITIONAL INFORMATION:

For VDO dashboard, short shaft. Can not exchange with other number.

ORDERNR: **SA1070-2**

BRAND NEW

Audi A6, VW old Bora Jetta / Jette King / Passat B5, Seat, Škoda 91.255.005

Stepper motor

APPLICATION:

Instrument cluster, dashboard

ADDITIONAL INFORMATION:

For VDO dashboard, short shaft with black line. Can not exchange with other number.

ORDERNR: **SA1070-3**

BRAND NEW

Audi, Citroën, Fiat, Mercedes, Peugeot, Renault, VW

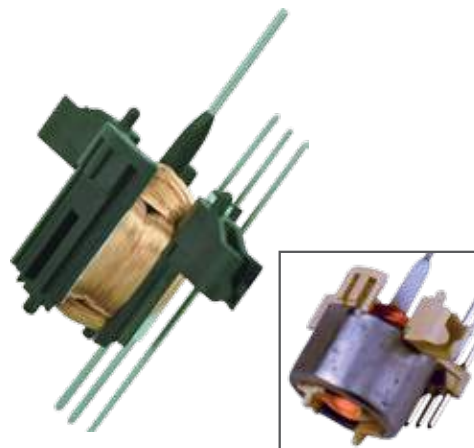
Pointer motor

APPLICATION:

Instrument cluster, dashboard

ADDITIONAL INFORMATION:

The long shaft, is about 11,5mm (outside the house) the Audi and Renault Laguna have long shafts. The motors are sold without metal cap.

ORDERNR: **SA1043**

BRAND NEW

Audi, Citroën, Fiat, Mercedes, Peugeot, Renault, VW

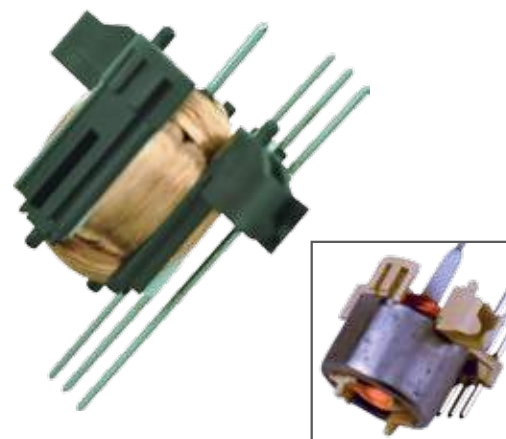
Pointer motor

APPLICATION:

Instrument cluster, dashboard

ADDITIONAL INFORMATION:

The short shaft, is about 6,9mm (outside the house). The Mercedes Vito and Peugeot 406 have short shafts. The motors are sold without metal cap.

ORDERNR: **SA1053**

BRAND NEW

BMW E38 / E39 / X5 / 3-series / 7-series, Land Rover

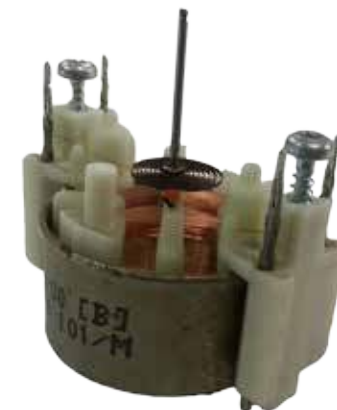
Stepper motor

APPLICATION:

Instrument cluster, dashboard

ADDITIONAL INFORMATION:

Km/h 1 / Min x 1000 / temp / oil tank, mental shaft, soldering needed.

ORDERNR: **SA1076**

REFURBISHED

BMW BMW 7-series / F01 / F02 / F03 / F04 / F07 / F08 / F10 / F11, GT

Stepper motor

APPLICATION:

Instrument cluster, dashboard

ADDITIONAL INFORMATION:

Metal shaft: 8mm long.

ORDERNR: **SA1077-1**

REFURBISHED

Buick First Land / Regal / Park Avenue, Fraen, Ford, Opel

Pointer motor

APPLICATION:

Instrument cluster, dashboard

ADDITIONAL INFORMATION:

Mental shaft, soldering needed.

ORDERNR: **SA1073**

BRAND NEW

Buick Laross GS Regal, Opel

Stepper motor

APPLICATION:

Instrument cluster, dashboard

ADDITIONAL INFORMATION:

Soldering needed. Identify No. 10 (very important), the difference between 10 and 6S is rotating direction, can not replace each other.

ORDERNR: **SA1079**

BRAND NEW

Chevrolet Cruz, VW new Jetta, BMW, Hyundai, Suzuki Swift

Stepper motor

APPLICATION:

Instrument cluster, dashboard

ADDITIONAL INFORMATION:

Mental shaft, soldering needed, clockwise rotation.



ORDERNR: **SA1068**

REFURBISHED

Chevrolet Cruz, VW new Jetta, BMW, Hyundai, Suzuki Swift

Stepper motor

APPLICATION:

Instrument cluster, dashboard

ADDITIONAL INFORMATION:

Mental shaft, soldering needed, clockwise rotation.



ORDERNR: **SA1068-1**

BRAND NEW

Chevrolet Cruz, VW new Jetta, BMW, Hyundai, Suzuki Swift

Stepper motor

APPLICATION:

Instrument cluster, dashboard

ADDITIONAL INFORMATION:

Mental shaft, soldering needed, counter-clockwise rotation.



ORDERNR: **SA1068-2**

REFURBISHED

Honda

Stepper motor

APPLICATION:

Instrument cluster, dashboard

ADDITIONAL INFORMATION:

Mental shaft, soldering needed.



ORDERNR: **SA1075**

REFURBISHED

Hyundai Elantra / Sonata / Accent, Rena, Kia Rio, VW new Bora

Stepper motor

APPLICATION:

Instrument cluster, dashboard

ADDITIONAL INFORMATION:

Plastic shaft, soldering not needed.



ORDERNR: **SA1066**

REFURBISHED

Hyundai Elantra / Sonata / Accent, Rena, Kia Rio, VW new Bora

Stepper motor

APPLICATION:

Instrument cluster, dashboard

ADDITIONAL INFORMATION:

Plastic shaft, soldering not needed.



ORDERNR: **SA1066-1**

BRAND NEW

Hyundai, KIA, Toyota Mark-X / Crown / Corolla

Stepper motor

APPLICATION:

Instrument cluster, dashboard

ADDITIONAL INFORMATION:

Metal shaft, soldering needed.



ORDERNR: **SA1078**

BRAND NEW

JMC, Citroën

Stepper motor

APPLICATION:

Instrument cluster, dashboard

ADDITIONAL INFORMATION:

Spring return motor.



ORDERNR: **SA1072**

REFURBISHED

Mazda 7, Ford

Pointer motor

APPLICATION:

Instrument cluster, dashboard

ADDITIONAL INFORMATION:

Mental shaft, soldering needed.



ORDERNR: **SA1074**

BRAND NEW

Mercedes S-Class Switec X27.589

Stepper motor

APPLICATION:

Instrument cluster, dashboard

ADDITIONAL INFORMATION:

Old model: X15.589, X27.589 is fully replaceable updated version for X25.589.



ORDERNR: **SA1049**

BRAND NEW

Nissan Qashqai / X-trail, Opel, Citroën C-Elysée

Stepper motor

APPLICATION:

Instrument cluster, dashboard

ADDITIONAL INFORMATION:

4 Pins soldering needed.



ORDERNR: **SA1081**

BRAND NEW

Nissan Tida / Livina / Teana

Stepper motor

APPLICATION:

Instrument cluster, dashboard

ADDITIONAL INFORMATION:

4 Pins soldering needed.



ORDERNR: **SA1082**

REFURBISHED

Opel micro Switec X27.168

Stepper motor

APPLICATION:

Instrument cluster, dashboard

ADDITIONAL INFORMATION:

X27.168 is fully replaceable updated version for X25.168.



ORDERNR: **SA1048**

BRAND NEW

Peugeot 508 (2010+)

Stepper motor

NEW

APPLICATION:

Instrument cluster, dashboard

ADDITIONAL INFORMATION:

Reference NO. VID2305AR1 length of plastic shaft 11.20MM



ORDERNR: **SA1083**

BRAND NEW

Peugeot, Fiat, Citroën 2003+

Stepper motor

APPLICATION:

Instrument cluster, dashboard

ADDITIONAL INFORMATION:

Mental shaft, soldering needed. Same function as SA1059.



ORDERNR: **SA1060**

BRAND NEW

Škoda, Suzuki Swift, Buick new Regal / new Lacrosse / Excellence, VW new Jetta

Stepper motor

APPLICATION:

Instrument cluster, dashboard

ADDITIONAL INFORMATION:

Mental shaft, soldering not needed.



ORDERNR: **SA1067**

REFURBISHED

Škoda, Suzuki Swift, Buick new Regal /
new Lacrosse / Excelle, VW new Jetta

Stepper motor

APPLICATION:

Instrument cluster, dashboard

ADDITIONAL INFORMATION:

Mental shaft, soldering not needed.



ORDERNR: SA1067-1

BRAND NEW

Subaru, Honda, Toyota Corolla, Mazda 6

Stepper motor

APPLICATION:

Instrument cluster, dashboard

ADDITIONAL INFORMATION:

Mental shaft.



ORDERNR: SA1069

REFURBISHED

VW Santana 2000, Buick Regal

Stepper motor

APPLICATION:

Instrument cluster, dashboard

ADDITIONAL INFORMATION:

RPM and oil meter.



ORDERNR: SA1071

REFURBISHED

VW Santana 2000, Buick Regal

Stepper motor

APPLICATION:

Instrument cluster, dashboard

ADDITIONAL INFORMATION:

Oil meter and temp meter.



ORDERNR: SA1071-1

REFURBISHED

VW Touareg MB, BMW, Porsche,
Mercedes

Stepper motor

APPLICATION:

Bosch dashboard

ADDITIONAL INFORMATION:

Metal shaft: 16mm long.



ORDERNR: SA1077

REFURBISHED

INSTRUMENT CLUSTER SPARE PARTS

Audi A4 (Bosch), VW Polo

Mini speaker

APPLICATION:
Instrument cluster, dashboard

ADDITIONAL INFORMATION:
Impedance: 16± 15% Ohm. FO: 450Hz. Input: 0.5W-1.0W. Output SPL: 83+/-3dB. Size: 42.5X39.6 MM. Operation Temp.: -40oC ~ +90oC. Weight: 9g. Packaging: 15pcs/Tube.



ORDERNR: SA1062

BRAND NEW

BMW pointer breaker / removal tool

BMW pointer breaker

APPLICATION:
Instrument cluster, dashboard

ADDITIONAL INFORMATION:
Will break the pointer from top, to remove pointer without breaking stepper motor at down side.



ORDERNR: SA1055

BRAND NEW

Citroën, Mercedes, Peugeot, Renault

Plastic cap

APPLICATION:
Pointer motor cap, for repair from Magneti Marelli instrument cluster

ADDITIONAL INFORMATION:
The clips are improved strong. Sacer offer the cap only, not the complete motor.



ORDERNR: SA1040-1

BRAND NEW

Mercedes W210 E-Class / CLK / CLS (2002-2009)

KM-Pointer gearwheel

APPLICATION:
Instrument cluster, dashboard

ADDITIONAL INFORMATION:
Plastic gearwheel pointer. We have solved the original problem, by making our design slightly different from the OE part.



ORDERNR: SA1050

BRAND NEW

SAAB 9-3 / 9-5 / SID1 / SID2 / SID3 (1998-2002)

Mini buzzer

APPLICATION:
SID Information center

ADDITIONAL INFORMATION:
Diameter: 28mm, Height: 5mm. Additional connect pins, easy assembly. Same application as SA1001.



ORDERNR: SA1061

BRAND NEW

VW Golf 5 / Golf 5 plus / Polo / Fox, Seat Ibiza, Škoda

Mini speaker

APPLICATION:
Instrument cluster, dashboard (Magneti Marelli / VDO / Visteon)

ADDITIONAL INFORMATION:
Impedance: 50+/-15% ohm. FO: 400Hz. Input: 0.3W-0.5W. Output SPL: 75 3dBA at 3000Hz, 600Hz. Size: ʔ37. Operation Temp.: -40 C ~ +90 C. Weight: 11g. Packaging: 15pcs/Tube. Max Output Power: 7W.



ORDERNR: SA1063

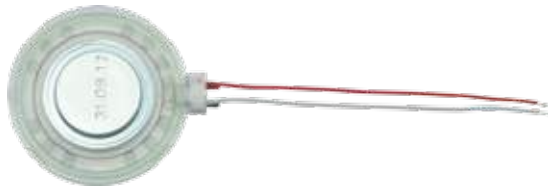
BRAND NEW

VW Touareg, Porsche Cayenne (2008-2008)

Mini speaker

APPLICATION:
Instrument cluster, dashboard

ADDITIONAL INFORMATION:
Impedance: 32 +/- 15% Ohm. FO: 17...KHz. Input: 0.3W ~ 0.5W. Output SPL: 72 +/- 2dBA. Size: ʔ34. Operation Temp.: -40oC ~ +90oC.



ORDERNR: SA1065

BRAND NEW



MINI BULBS

Experts like you to provide customer satisfaction with perfect repaired work. Then the last but not least thing is replacing old bulbs because we'll never know if the bulbs still light up another day. For such reason, Sacer has expanded full range of mini bulbs used in automotive instrument clusters. And this time, LED mini bulbs are also available. The default color is white, if you need another fancy color blue / red / purple, just say it!

T5, 12V, 1.2W, 20-30LUX, 0.08A mini bulbs

Tungsten bulb

APPLICATION:
Instrument clusters, info displays, ACC displays

ADDITIONAL INFORMATION:
Type: T5, Dimension: 8.0*12.0*12.0*1.7mm, Input: 12V, Power: 1.2W, Luminance: 10CM \pm 5%: 10LUX, Currency: 0.08A, Color: warm (white).



ORDERNR: **SA8002**

BRAND NEW

T5, 12v, 250LUX, 2 LED bulb

2 LED bulb

APPLICATION:
Instrument clusters, info displays, ACC displays

ADDITIONAL INFORMATION:
Type: T5, Dimension: 8.0*12.0*9.2*1.7mm, Input: 12V, Luminance: 10CM \pm 5%: 250LUX, Currency: <0.01A, Color: white.



ORDERNR: **SA8002LW2**

BRAND NEW

T5, 12V, 300LUX, 3 LED bulb

3 LED bulb

APPLICATION:
Instrument clusters, info displays, ACC displays

ADDITIONAL INFORMATION:
Type: T5, Dimension: 8.0*12.0*11.5*1.7mm, Input: 12V, Luminance: 10CM \pm 5%: 300LUX, Currency: <0.01A, Color: white.



ORDERNR: **SA8002LW3**

BRAND NEW

T5, 12V, 1.2W, 18LUX Tungsten bulb

Tungsten bulb without socket

APPLICATION:
Reference No. 98900 (small)

ADDITIONAL INFORMATION:
Type: T5, Dimension: 4.9*18.3*4.5*7.0mm, Input: 12V, Power: 1.2W, Luminance: 10CM \pm 5%: 18LUX, Currency: 0.08A, Color: warm (white).



ORDERNR: **SA8004**

BRAND NEW

T10, 12V, 3W, 80LUX Tungsten bulb

Tungsten bulb without socket

APPLICATION:
Reference No. 9472109 (big)

ADDITIONAL INFORMATION:
Type: T10, Dimension: 9.7*24.8*9.0*8.5mm, Input: 12V, Power: 3W, Luminance: 10CM \pm 5%: 80LUX, Currency: 0.2A, Color: warm (white).



ORDERNR: **SA8005**

BRAND NEW

T5, 12V, 2W, 45LUX Tungsten bulb

Tungsten bulb

APPLICATION:
Instrument clusters, info displays, ACC displays

ADDITIONAL INFORMATION:
Type: T5, Dimension: 8.3*12.5*16.5*1.5mm, Input: 12V, Power: 2W, Luminance: 10CM \pm 5%: 45LUX, Currency: 0.14A, Color: warm (white).



ORDERNR: **SA8006**

BRAND NEW

T5, 12V, 300LUX, LED Bulb

LED bulb (color: blue)

APPLICATION:
Instrument clusters, info displays, ACC displays

ADDITIONAL INFORMATION:
Type: T5, Dimension: 8.3*12.5*14.2*1.5mm, Input: 12V, Luminance: 10CM \pm 5% 300LUX, Currency: <0.01A, Color: blue.



ORDERNR: **SA8006LB2**

BRAND NEW

T5, 12V, 300LUX 1 LED bulb

1 LED bulb

APPLICATION:

Instrument clusters, info displays, ACC displays

ADDITIONAL INFORMATION:

Type: T5, Dimension: 8.3*12.5*12.0*1.5mm, Input: 12V, Luminance: 10CM \pm 5%: 300LUX, Currency: <0.01A, Color: white.



ORDERNR: **SA8006LW1**

BRAND NEW

T5, 12V, 200LUX 2 LED bulb

2 LED bulb

APPLICATION:

Instrument clusters, info displays, ACC displays

ADDITIONAL INFORMATION:

Type: T5, Dimension: 8.3*12.5*12.0*1.5mm, Input: 12V, Luminance: 10CM \pm 5%: 200LUX, Currency: <0.01A, Color: white.



ORDERNR: **SA8006LW2**

BRAND NEW

T3, 12V, 1W, 6LUX Tungsten bulb

Tungsten bulb

APPLICATION:

Instrument clusters, info displays, ACC displays

ADDITIONAL INFORMATION:

Type: T3, Dimension: 4.5*8.0*8.5*1.7mm, Input: 12V, Power: 1W, Luminance: 10CM \pm 5%: 6LUX, Currency: 0.05A, Color: warm (white).



ORDERNR: **SA8008**

BRAND NEW

T3, 12V, 100LUX 1 LED bulb

1 LED bulb

APPLICATION:

Instrument clusters, info displays, ACC displays

ADDITIONAL INFORMATION:

Type: T3, Dimension: 4.5*8.0*10.0*1.7mm, Input: 12V, Luminance: 10CM \pm 5%: 100LUX, Currency: <0.01A, Color: white.



ORDERNR: **SA8008LW1**

BRAND NEW

T4, 12V, 1W, 6LUX Tungsten bulb

Tungsten bulb

APPLICATION:

Instrument clusters, info displays, ACC displays

ADDITIONAL INFORMATION:

Type: T4, Dimension: 5.8*10.0*12.8*1.7mm, Input: 12V, Power: 1W, Luminance: 10CM \pm 5%: 6LUX, Currency: 0.05A, Color: warm (white).



ORDERNR: **SA8009**

BRAND NEW

T4, 12V, 200LUX, LED bulb

LED bulb (color: blue)

APPLICATION:

Instrument clusters, info displays, ACC displays

ADDITIONAL INFORMATION:

Type: T4, Dimension: 5.8*10.0*10.8*1.5mm, Input: 12V, Luminance: 10CM \pm 5%: 200LUX, Currency: <0.01A, Color: blue.



ORDERNR: **SA8009LB2**

BRAND NEW

T4, 12V, 200LUX 2 LED bulb

2 LED bulb

APPLICATION:

Instrument clusters, info displays, ACC displays

ADDITIONAL INFORMATION:

Type: T4, Dimension: 5.8*10.0*10.8*1.5mm, Input: 12V, Luminance: 10CM \pm 5%: 200LUX, Currency: <0.01A, Color: white.



ORDERNR: **SA8009LW2**

BRAND NEW

T8, 12V, 1.2W, 35LUX Tungsten bulb

Tungsten bulb

APPLICATION:

Instrument clusters, info displays, ACC displays

ADDITIONAL INFORMATION:

Type: T8, Dimension: 8.6*12.5*20.0*1.7mm, Input: 12V, Power: 1.2W, Luminance: 10CM \pm 5%: 35LUX, Currency: 0.08A, Color: warm (white).



ORDERNR: **SA8010**

BRAND NEW

T8.5, 12V, 1.5W, 45LUX Tungsten bulb

Tungsten bulb

APPLICATION:
Instrument clusters, info displays, ACC displays

ADDITIONAL INFORMATION:
Type: T8.5, Dimension: 8.6*12.5*20.0*1.7mm, Input: 12V, Power: 1.5W, Luminance: 10CM ±5%: 45LUX, Currency: 0.11A, Color: warm (white).



ORDERNR: **SA8010-1** | BRAND NEW

T8.5, 12V, 250LUX 1 LED bulb

1 LED bulb

APPLICATION:
Instrument clusters, info displays, ACC displays

ADDITIONAL INFORMATION:
Type: T8.5, Dimension: 8.0*12.0*21.0*1.7mm, Input: 12V, Luminance: 10CM ±5%: 250LUX, Currency: <0.01A, Color: white.



ORDERNR: **SA8010LW1** | BRAND NEW

T8, 12V, 200LUX 2 LED bulb

2 LED bulb

APPLICATION:
Instrument clusters, info displays, ACC displays

ADDITIONAL INFORMATION:
Type: T8, Dimension: 8.00*12.0*21.0*1.7mm, Input: 12V, Luminance: 10CM ±5%: 200LUX, Currency: <0.01A, Color: white.



ORDERNR: **SA8010LW2** | BRAND NEW

T8, 12V, 300LUX 3 LED bulb

5 LED bulb

APPLICATION:
Instrument clusters, info displays, ACC displays

ADDITIONAL INFORMATION:
Type: T8, Dimension: 8.0*12.0*22.0*1.7mm, Input: 12V, Luminance: 10CM ±5%: 300LUX, Currency: 0.01A, Color: white.



ORDERNR: **SA8010LW5** | BRAND NEW

T8.5, 12V, 150LUX 1 LED bulb

1 LED bulb

APPLICATION:
Instrument clusters, info displays, ACC displays

ADDITIONAL INFORMATION:
Type: T8.5, Dimension: 8.5*12.5*17.0*1.5mm, Input: 12V, Luminance: 10CM ±5%: 150LUX, Currency: <0.01A, Color: white.



ORDERNR: **SA8011LW1** | BRAND NEW

T8.5, 12V, 250LUX 2 LED bulb

2 LED bulb

APPLICATION:
Instrument clusters, info displays, ACC displays

ADDITIONAL INFORMATION:
Type: T8.5, Dimension: 8.5*12.5*16.0*1.5mm, Input: 12V, Luminance: 10CM ±5%: 250LUX, Currency: <0.01A, Color: white.



ORDERNR: **SA8011LW2** | BRAND NEW

T8.5, 12V, 200LUX 2 LED bulb

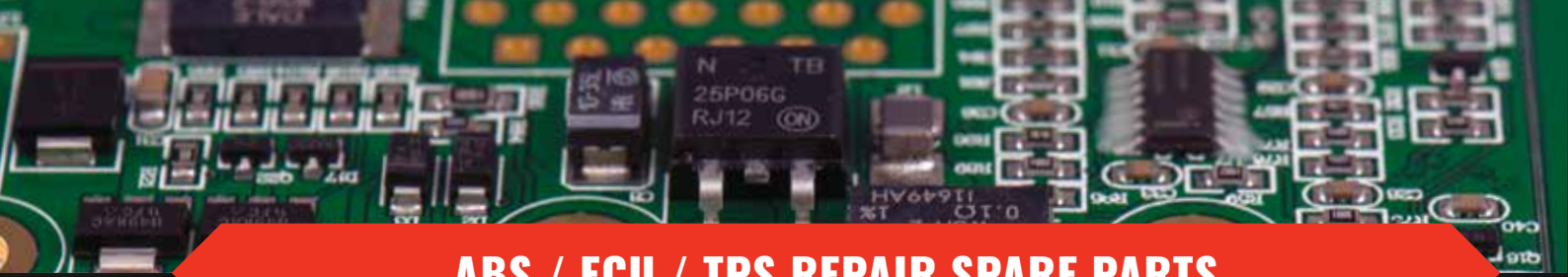
2 LED bulb

APPLICATION:
Instrument clusters, info displays, ACC displays

ADDITIONAL INFORMATION:
Type: T8.5, Dimension: 8.5*11.3*16.0*1.7mm, Input: 12V, Luminance: 10CM ±5%: 200LUX, Currency: <0.01A, Color: white.



ORDERNR: **SA8012LW2** | BRAND NEW



ABS / ECU / TPS REPAIR SPARE PARTS

During the repair process, it is always hard to find components failling out, which you cannot get separately from a OE manufacturer. It's Sacer's duty to help you fix this. Sacer could offer the cheapest but effective solution by redesigning and remanufacturing.

Glass sensors for A-Class VDO unit

A glass sensor

APPLICATION: OE (original) airflow resistor & heater (for inside of ECU / airflowmeter). The sensors are used for an ECU with integrated airflowmeter.

ADDITIONAL INFORMATION: The sensors are made on a very thin glass substrate and therefore need special carefull handling in order not to break! Package and unpackage: 1. We have improved the package method. 2. Attention: Please put the package tray on the desk in order to keep it carefully.



ORDERNR: **SA1020**

BRAND NEW

Mercedes HFM ECU

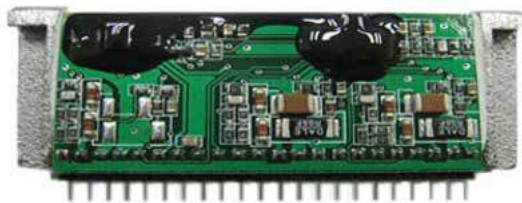
Ignition board

APPLICATION:

4 Cylinder ignition driver board

ADDITIONAL INFORMATION:

We supply an conventional aftermarket replacement board. To use ignition boards you can either: 1. Cut off pins 1, 2, 3 & 5 (see below) or 2. Remove the solder from the holes on the ECM PCB and install the ignition boards module without cutting the pins. It is quite safe to install the module without removing the extra pins.



ORDERNR: **SA1090**

BRAND NEW

Mercedes HFM ECU

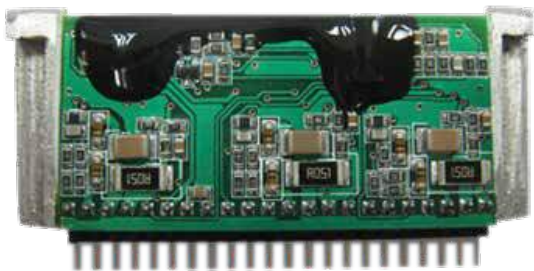
Ignition board

APPLICATION:

6 Cylinder ignition driver board

ADDITIONAL INFORMATION:

We supply an conventional aftermarket replacement board.



ORDERNR: **SA1091**

BRAND NEW

Volvo, Saab Jetronic ECU

Ignition board

APPLICATION:

Ceramic controller board

ADDITIONAL INFORMATION:

We supply an conventional aftermarket replacement board.



ORDERNR: **SA1092**

BRAND NEW

Porsche 928 / S4 / GTS ECU

Ignition board

APPLICATION:

ECU

ADDITIONAL INFORMATION:

We supply an conventional aftermarket replacement board.



ORDERNR: **SA1093**

BRAND NEW

ATE MK 60 ABS ECU

ABS cap

APPLICATION:

Aluminium cap for ABS ECU. Makeup cap after repair, like brand new parts.

ADDITIONAL INFORMATION:

Material: AlMnSi/0.5. Surface treatment: Salb, anodizing black.



ORDERNR: **SA6001**

BRAND NEW

ATE MK 25 ABS ECU

ABS cap

APPLICATION:

Aluminium cap for ABS ECU. Makeup cap after repair, like brand new parts.

ADDITIONAL INFORMATION:

Material: AlMnSi/0.5. Surface treatment: Salb, anodizing black.



ORDERNR: **SA6002**

BRAND NEW

Bosch 5.7 ABS ECU

ABS cap

APPLICATION:
Aluminium cap for ABS ECU. Makeup cap after repair, like brand new parts.

ADDITIONAL INFORMATION:
Material: AlMnSi/0.5. Surface treatment: Salb, anodizing black.



ORDERNR: **SA6003** | BRAND NEW

Bosch 5.3 ABS ECU

ABS cap

APPLICATION:
Aluminium cap for ABS ECU. Makeup cap after repair, like brand new parts.

ADDITIONAL INFORMATION:
Material: AlMnSi/0.5. Surface treatment: Salb, anodizing black.



ORDERNR: **SA6004** | BRAND NEW

ATE MK 20 ABS ECU

ABS cap

APPLICATION:
Aluminium cap for ABS ECU. Makeup cap after repair, like brand new parts.

ADDITIONAL INFORMATION:
Material: AlMnSi/0.5. Surface treatment: Salb, anodizing black.



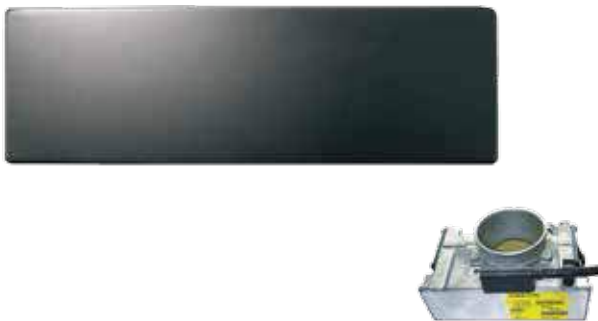
ORDERNR: **SA6005** | BRAND NEW

Volvo Magneti Marelli throttle body

Throttle body cap

APPLICATION:
ETM cover

ADDITIONAL INFORMATION:
SA300 Volvo TPS sensor, SA301 cable clip, SA6006 Protective cap after repair.



ORDERNR: **SA6006** | BRAND NEW

Cable clamps for volvo throttle body

Clip work together with SA300 Volvo TPS sensors

APPLICATION:
Volvo throttle body (Magneti Marelli)

ADDITIONAL INFORMATION:
SA300 Volvo TPS sensor, SA301 cable clip, SA6006 Protective cap after repair.



ORDERNR: **SA301** | BRAND NEW

Airflowmeter cap

All denso airflowmeters

APPLICATION:
Aluminium cap for MAF

ADDITIONAL INFORMATION:
Material: AlMnSi/0.5. Surface treatment: Salb, anodizing black.



ORDERNR: **SA6007** | BRAND NEW

Siemens VDO Simtec 70

ECU CAP

APPLICATION:
Aluminium cap for ECU. Makeup cap after repair, like brand new parts.

ADDITIONAL INFORMATION:
Material: AlMnSi/0.5. Surface treatment: Salb, anodizing black.



ORDERNR: **SA6008** | BRAND NEW

Siemens VDO Simtec 71

ECU CAP

APPLICATION:
Aluminium cap for ECU. Makeup cap after repair, like brand new parts.

ADDITIONAL INFORMATION:
Material: AlMnSi/0.5. Surface treatment: Salb, anodizing black.



ORDERNR: **SA6009** | BRAND NEW

Bosch 5.7 ABS unit

ESD transport cap

APPLICATION:

ESD protective cover after repairing ABS unit. Prevent dusty and humidity infect on contact spot during transport. And it's helpful to confide you customer a professional image for your company. ESD materials: prevention of statical electricity.

ADDITIONAL INFORMATION:

Size: 130.20x98.70x12.80mm. Weight: 16.60g. Colour: black.



ORDERNR: **SA6010**

BRAND NEW

Bosch 5.3 ABS unit

ESD transport cap

APPLICATION:

ESD protective cover after repairing ABS unit. Prevent dusty and humidity infect on contact spot during transport. And it's helpful to confide you customer a professional image for your company. ESD materials: prevention of statical electricity.

ADDITIONAL INFORMATION:

Size: 86.40x82.40x12mm. Weight: 9.2g. Colour: black.



ORDERNR: **SA6011**

BRAND NEW

AFH45M - 46 ABS unit

ESD Transport CAP

APPLICATION:

ESD protective cover after repairing ABS unit. Prevent dusty and humidity infect on contact spot during transport. And it's helpful to confide you customer a professional image for your company. ESD materials: prevention of statical electricity.

ADDITIONAL INFORMATION:

Size: 88x61x42.30mm. Weight: 6.4g. Colour: black.



ORDERNR: **SA6012**

BRAND NEW

VDO Group DC motor

DC motor

APPLICATION:

Idle speed control motor

ADDITIONAL INFORMATION:

Outer size: 45.3x31mm, 12VDC.



ORDERNR: **SA1044**

BRAND NEW

JMC Diesel

DC Motor

NEW

APPLICATION:

Throttle body

ADDITIONAL INFORMATION:

OD=32.0mm,HL=50.9mm,mental shaft \varnothing =2.3mm



ORDERNR: **SA1046-1**

BRAND NEW

Cherry M6, Honda EV8, CIVIC, VW Jetta (2006) / Touran / Laida / SANTANA 3000

DC motor

NEW

APPLICATION:

Throttle body

ADDITIONAL INFORMATION:

OD=35.80mm,HL=57.0mm,mental shaft \varnothing =4.0mm



ORDERNR: **SA1046-2**

BRAND NEW

Lexus, Acura, Ford, Honda, Mazda, Renault, Toyota Shaft Length L=9MM

DC motor

NEW

APPLICATION: Door lock motor

ADDITIONAL INFORMATION: All listed models are reported by customers, do not mean can apply for all with the same motor. Compatibility should be verified by customer. Specifics: 2pins, **shaft Length L=9MM**, 8-15 VDC, Size: 24.2x18.3x45mm.

Shaft Length SA1045-1: 9MM / SA1045-2: 12MM / SA1045-3: 20MM / SA1045-4: 27MM



ORDERNR: **SA1045-1**

BRAND NEW

Lexus, Acura, Ford, Honda, Mazda, Renault, Toyota Shaft Length L=12MM

DC motor

NEW

APPLICATION: Door lock motor

ADDITIONAL INFORMATION: All listed models are reported by customers, do not mean can apply for all with the same motor. Compatibility should be verified by customer. Specifics: 2pins, **shaft Length L=12MM**, 8-15 VDC, Size: 24.2x18.3x45mm.

Shaft Length SA1045-1: 9MM / SA1045-2: 12MM / SA1045-3: 20MM / SA1045-4: 27MM



ORDERNR: **SA1045-2**

BRAND NEW

**Lexus, Acura, Ford, Honda, Mazda,
Renault, Toyota Shaft Length L=20MM**

NEW

DC motor

APPLICATION: Door lock motor

ADDITIONAL INFORMATION: All listed models are reported by customers, do not mean can apply for all with the same motor. Compatibility should be verified by customer. Specifics: 2pins, **shaft Length L=20MM**, 8-15 VDC, Size: 24.2x18.3x45mm.

Shaft Length SA1045-1: 9MM / SA1045-2: 12MM / SA1045-3: 20MM / SA1045-4: 27MM



ORDERNR: **SA1045-3**

BRAND NEW

**Lexus, Acura, Ford, Honda, Mazda,
Renault, Toyota Shaft Length L=27MM**

NEW

DC motor

APPLICATION: Door lock motor

ADDITIONAL INFORMATION: All listed models are reported by customers, do not mean can apply for all with the same motor. Compatibility should be verified by customer. Specifics: 2pins, **shaft Length L=27MM**, 8-15 VDC, Size: 24.2x18.3x45mm.

Shaft Length SA1045-1: 9MM / SA1045-2: 12MM / SA1045-3: 20MM / SA1045-4: 27MM



ORDERNR: **SA1045-4**

BRAND NEW

SOLENOID VALVE FOR COMPRESSOR AIR SUSPENSION

**Solenoid Valve For Compressor Air
Suspension 9682022980 WABCO**

Brand New Air Compressor Solenoid valve

APPLICATION:

Air Suspension Compressor

MAKE / MODELS:

Citroën C4 Picasso (2006-2013) / Picasso Grand C4 (2006-2013)

ADDITIONAL INFORMATION:

OE: 9682022980 WABCO. An air compressor assembly includes
3 solenoid valves: 2 pcs SA410 + 1 pcs SA411



ORDERNR: **SA410**

BRAND NEW

**Solenoid Valve For Compressor Air
Suspension 9682022980 WABCO**

Brand New Air Compressor Solenoid valve

APPLICATION:

Air Suspension Compressor

MAKE / MODELS:

Citroën C4 Picasso (2006-2013) / Picasso Grand C4 (2006-2013)

ADDITIONAL INFORMATION:

OE: 9682022980 WABCO. An air compressor assembly includes
3 solenoid valves: 2 pcs SA410 + 1 pcs SA411



ORDERNR: **SA411**

BRAND NEW

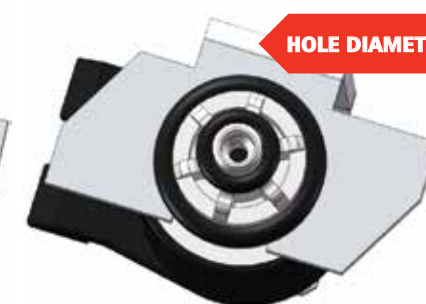
SA410 & SA411: Identical appearance, different hole dimension.

HOLE DIAMETER: Ø1MM



SA410

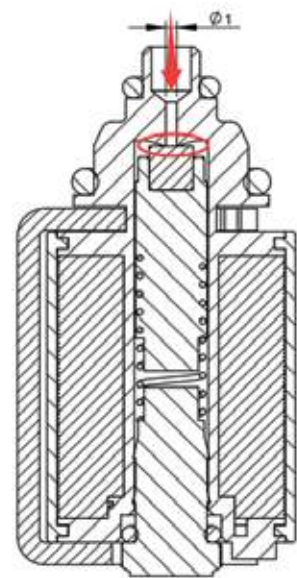
HOLE DIAMETER: Ø2MM



SA411

How SA410 / SA411 can help?

- Symptoms of a bad or failing air suspension compressor:
- Vehicle is maintaining a lower ride height than usual.
 - Abnormal noises during operation
 - The compressor will not turn on



If after a total examination, it is only the solenoid valve problem. Just replace the faulty valve and the problem is solved!

- Solenoid valve malfunction:
when closed, air is still flowing in as indicated by the arrow.
- Air leakage is the common failure of the compressor, which often due to the malfunction of the solenoid valves, a valve with internal parts aged or corroded would lead to the poor airtightness.

Quality Improvement From Sacer:

- **OE Common Faulty** -- Original solenoid valve is easy to go bad, which ascribe to the poor corrosion resistance of the iron core. After working for a period of time, It gets so corroded that it is not able to fully block up the air piping, which finally leads to air leakage.
- **Our Quality Improvement** -- As above, our solenoid valve quality has been well improved by using the special coating process (Zinc nickel coating) to ensure a better corrosion resistance performance. Longer durability means longer serve life.

Why Sacer SA410 / SA411:

1. **A sharp drop-off in repair cost** -- Fix your problems without replacing the whole air compressor at a high price, greatly lower your repair cost.
2. **An extended service life** -- Quality has been well improved. Longer service life achieved. (as shown in the experiment).
3. **A perfect fit** -- Strictly and fully meet the OE specifications, exactly match the application, super easy to install.
4. **Quality Guaranty** -- Every unit is confirmed to get pass a full function OQC test and HALT test. Every unit is under 2 years full European Warranty.

AUTOMOTIVE SEMICONDUCTORS

MC68HC908AZ60CFU(2J74Y)

MC68HC908AZ60CFU (2J74Y) (NEW) MOT QFP64

APPLICATION:
Microcontroller

ADDITIONAL INFORMATION:
Path form ECU.



ORDERNR: SA1500-2

BRAND NEW

HD151007 Suzuki

HD151007

APPLICATION:
Ignition driver

ADDITIONAL INFORMATION:
Path form ECU.



ORDERNR: SA1502

BRAND NEW

UDQ2916EBT Sagem

UDQ2916EBT PLCC44 ALLEGRO (New)

APPLICATION:
Sagem stepper motor driver

ADDITIONAL INFORMATION:
Path form ECU.



ORDERNR: SA1658

BRAND NEW

SOP36 / Bosch / EDC15C2 Diesel ECU

30402 SOP36 Bosch for Bosch / EDC15C2 Diesel ECU

APPLICATION:

Relais driver

ADDITIONAL INFORMATION:

Path form ECU.

ORDERNR: **SA1513**

BRAND NEW

QFP64 / Bosch / EDC15C2 Diesel ECU

30403 QFP64 Bosch (NEW)

APPLICATION:

Injector driver, etc.

ADDITIONAL INFORMATION:

Path form ECU.

ORDERNR: **SA1514**

BRAND NEW

SOP20 / Bosch / Ignition Driver

30397 SOP20

APPLICATION:

ME7.5 ECU, Ignition driver

ADDITIONAL INFORMATION:

Path form ECU.

ORDERNR: **SA1515**

BRAND NEW

Mazda 323 / 626 ABS unit

Relay and pins

APPLICATION:

For rebuilding Mazda 323 / 626 ABS unit

ADDITIONAL INFORMATION:

25 gilded pins + two nais relays.

ORDERNR: **SA1080**

BRAND NEW

PRECISE EQUIP & TOOLS FOR ELECTRONIC REPAIR

- Heater Bonding Machine
- Bonding Fixture / JIGS
- Bonding Accessory
- High Resolution Microscope
- NANO Clips
- Bit Set
- Wiring Assistance Kit test tool
- UV EPROM Eraser
- DC socket

Saab SID1 / SID2 / SID3 bonding fixtures PCB side

Bonding fixtures

APPLICATION:

For fixing display PCB side

ADDITIONAL INFORMATION:

For SA820.

ORDERNR: **SA820-1001**

BRAND NEW

Saab, Mercedes, BMW heat bonding machine

Heat bonding machine

APPLICATION:

For bonding display on PCB board

ADDITIONAL INFORMATION:

Complete set with camera & monitor.

ORDERNR: **SA920**

BRAND NEW

Saab, Mercedes, BMW heat bonding machine

Heat bonding machine

APPLICATION:

For bonding display on PCB board

ADDITIONAL INFORMATION:

Basic version.

ORDERNR: **SA820**

BRAND NEW

Saab SID1 / SID2 / SID3 bonding fixtures LCD side

Bonding fixtures

APPLICATION:

For fixing display LCD side

ADDITIONAL INFORMATION:

For SA820.



ORDERNR: **SA820-1001-LCD**

BRAND NEW

Mercedes, Saab, BMW bonding fixtures PCB side

Bonding fixtures

APPLICATION:

For fixing display PCB side

ADDITIONAL INFORMATION:

For SA820.



ORDERNR: **SA820-universal**

BRAND NEW

Mercedes bonding fixtures PCB side

Bonding fixtures

APPLICATION:

For fixing display PCB side

ADDITIONAL INFORMATION:

For SA820.



ORDERNR: **SA820-Benz**

BRAND NEW

BMW bonding fixtures PCB side

Bonding fixtures

APPLICATION:

For fixing display PCB side

ADDITIONAL INFORMATION:

For SA820.



ORDERNR: **SA820-BMW**

BRAND NEW

BMW bonding fixtures LCD side

Bonding fixtures

APPLICATION:

For fixing display LCD side

ADDITIONAL INFORMATION:

For SA820.



ORDERNR: **SA820-BMW-LCD**

BRAND NEW

Fujifilm Prescale

Prescale pressure indicating film

APPLICATION:

Pressure measurement film indicates applied pressure differences as red color density variations. From dentistry to industry, this Fujifilm technology finds wide application. Especially use for bonding head modification use. (Apply on SA820 / SA920 heat bonding machine).

ADDITIONAL INFORMATION:

Two films use as a set, but stored separately.



ORDERNR: **SA820-Pressure paper**

BRAND NEW

Silicone rubber

Fuji Sarcon

APPLICATION:

Apply this film during thermal bonding.

ADDITIONAL INFORMATION:

Thermanly conductive sheet shaped material with reinforcement which coated Sarcon TR to a glass cloth. Support on heat bonding process. (Apply on SA820 / SA920 heat bonding machine).



ORDERNR: **SA820-rubber**

BRAND NEW

Adjustable auto-focus microscope

USB adjustable auto-focus portable USB pen microscope with toplight

APPLICATION: Working platforms: Windows 7 XP Vista, Mac Linux • Magnification: 10-200 times (adjustable) • Photograph: taken by the software • Videography: high compression • Light source: adjustable LED illumination (USB interface) • Software measure: arc length, point-point length, angle (unit: um) • Focusing: auto focus + manual • Max size: 17mm×126mm • Pixels: 2.0M • Resolution: 1280*960 960*720 640*480 320*240 • Display speed: 30fps • Interface: USB2.0

ADDITIONAL INFORMATION: Package: English neutro-packing (184mm*125mm*67mm). Weight: 235g. Microscope stand package: 107mm*37mm*182mm. Weight: 4.5 Kg.



ORDERNR: **SA853**

BRAND NEW

Digital microscope

Electronic video digital microscope with top light, eyelens and lcd monitor

APPLICATION: The applicable scope is very suitable for the electronics automotive industry. Camera: 480 (SONY chip). eyelens: 0.5 time. objective lens: 0.7-4.5 time. photo source: Fluorescence photo source. monitor: 8 inches. liquid crystal support.

ADDITIONAL INFORMATION: Total enlargement factor: 7-150 times; resolution: 480 (sony chip); resolution: 640x480; input voltage: 220V; output voltage: 12V; output mode: AV connection; color: colored; outward appearance: alloy outer covering, standard C connection; outward appearance size: 45*50*50MM operating temperature: - 10-60 degrees; objective lens: 0.7-4.5 change time continuously; eyelens: 0.5X; fluctuation scope: 270mm; handwheel focusing scope: 65mm; center distance: 140mm; column diameter: 25mm; lens connection diameter: 50mm; support gross altitude: 355mm; foundation size: 390X270X28MM; net weight: 6KG.



ORDERNR: **SA854**

BRAND NEW

Micro nano clip

Micro nano clip

APPLICATION:

Micro SMT test clips feature micro-sized pincers tips to access IC leads down to 0.20mm wide on a 0.30mm pitch. The clip's extension barrels are insulated for added protection.

ADDITIONAL INFORMATION:

Voltage-rated: 25V, current rating: 0.3A, color: black and red, contents: 3pcs x black nano clip, 3pcs x red nano clip, 3pcs x lead sets for connecting the micro clips to your instrumentation and test equipment, 1pcs x ground lead, 1pcs x hold rods for attaching multiple microclips together as a group.



ORDERNR: **SA856**

BRAND NEW

Micro nano clip

Micro nano clip

APPLICATION:

Micro-sized pincer tips to access IC leads. Single nano clip is also available for your need.

ADDITIONAL INFORMATION:

Voltage-Rated: 25V, current rating: 0.3A, color: black (in stock). If you need different color, please contact us when you ordering.



ORDERNR: **SA858**

BRAND NEW

Single nano clip

Test clips

APPLICATION:

Micro-sized pincer tips to access IC leads SMD1.25mm

ADDITIONAL INFORMATION:

Voltage-rated: 25V, current rating: 0.3A Size: 3.50mm tip, color: available in black, red, white, blue, green and yellow color. If you have specified request on color, please contact us when ordering.



ORDERNR: **SA859**

BRAND NEW

Universal bit set

Universal bit set with most common hex, torx and torx with hole

APPLICATION:

Universal bit set with most common hex, torx and torx with hole

ADDITIONAL INFORMATION:

With free magnifier glass.



ORDERNR: **SA855**

BRAND NEW

Wiring assistance kit test tool

Wiring assistance kit test tool

APPLICATION:

Wiring assistance kit test tool.



ORDERNR: **SA857**

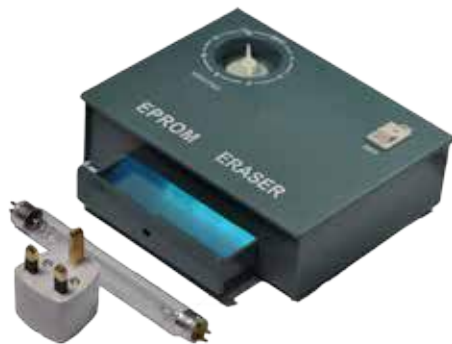
BRAND NEW

UV EPROM eraser

UV EPROM eraser

APPLICATION:

UV EPROM eraser



ORDERNR: **SA864**

BRAND NEW

DC Jack power socket PIN=1MM

SMD 6.0mm X 9.0mm

APPLICATION:

DC socket



ORDERNR: **SA861-1**

BRAND NEW

AUTO ECU SENSOR SIGNAL

All car crank signal simulation experts

APPLICATION:

- All cars crank signal simulation experts. It can be set arbitrary waveform output, can produce all the models of today's engine crankshaft, camshaft signals (hall, magnetic, optical signals), waveform data, waveform memory card from the long-term preservation, aveform data for free online updates.
- All cars sensor signal simulation experts speed signal, speed signal (Hall, magnetic, optical signals), ABS wheel speed signal, the oxygen sensor signal, throttle signal, air flow, inlet pressure sensor (analog, digital) and other signal simulation.
- All cars actuator experts tachometer, odometer, blower control module, injector, ignition coil, ignition module, frequency and pulse width control solenoid valve, stepper motor drive (four-lane, six-lane), car audio amplifiers, etc.; All cars actuator simulation experts: Ignition coil, injectors, idle speed stepper motor, ultrasonic generators, actuators simulation. Strong domestic first-line five-channel editing functions crank signal arbitrary wave signal analog output.

ADDITIONAL INFORMATION:

Function:

1. Users can set the engine control system, independent of different types of crank signal output (for all models of computer-driven)
2. Automatic transmission input and output shaft signal simulation
3. Set the waveform data is written directly
4. Engine speed signal output
5. Speed signal output (Hall signal, magnetic signal)
6. Three, four-channel ABS wheel speed signal output
7. PC board working current test
8. EGR solenoid valve drive
9. Carbon can clear the solenoid valve drive
10. Tachometer drive
11. Blower Control Module Driver
12. Idle valve driver
13. Stepper motor drive (4, 6 lines)
14. Injector Driver
15. Ignition coil driver
16. Ignition module drive
17. Parking sensor (ultrasound) probe drive
18. Automatic Shift Valve Drive
19. Shift quality valve drive
20. hydraulic valve drive
21. Water temperature, intake air temperature, outdoor temperature, evaporation temperature sensor signal simulation box
22. Oxygen sensor signal simulation (manual)
23. Oxygen sensor signal simulation (auto signal)
24. Throttle signal simulation.



EXHIBITIONS



2017
Equip auto
Paris, France

2016
Automechanika
Frankfurt, Germany

2015
Equip auto
Paris, France

2014
Automechanika
Frankfurt, Germany

2013
Interauto
Moscow, Russia

2011
Autopromotec
Bologna, Italy

2010
Paace
Mexico city, Mexico

2010
Automechanika
Frankfurt, Germany

SACER TEAM



“Quality is never an accident; it is always the result of high intention, sincere effort, intelligent direction and skillful execution; it represents the wise choice of many alternatives.”

- William A. Foster



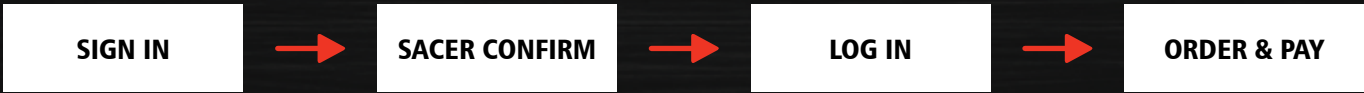
QUALITY POLICY

- Keep improving to delight our costumers
- Strive for excellence to establish the first rate company

QUALITY GOAL

1. Establish and implement effective quality system and constantly improve
2. Production Pass Rate > 97%
3. Customer Satisfaction Rate (CSR) > 95%
4. On time Delivery Rate (ODR) > 95%

HOW TO ORDER AT THE SACER SHOP?



1. You should make sure your information is correct and complete.
2. When you get a personal username and password, you'll can see a special discount price.
3. Tracking information will be automatically sent through email.

Order **now** at Sacer's online shop!
www.sacer-shop.com

CERTIFICATES



WARRANTY RESTRICTIONS

Warranty service

Sacer offers a TWO YEAR WARRANTY to all the CMP parts and 30 Days for the semiconductor.

Limitations and exceptions

1. Please inspect the products quantity, appearance, out & inner packing within 3 Working-Days after receiving them, otherwise, Sacer will not cover it in warranty.
2. Out-package: If the out-package is broken or short in quantity when arrived, please apply for compensation from express company.
Inner-package: If the products are broken or damaged when you does an inspection, please contact the Sacer sales department in time.



3. Sacer does not accept unconditional return for new arrived un-used products, but we accept replacement.
4. Sacer does not accept the whole same batch return when customer found only a few detective products in that batch, any comments please come to our customer complain process.
5. The warranty service is offered to the product, in the judgement of Sacer's technician. The warranty is null and void under the following circumstances for products LCD glass, ribbons, ECU, Sensor and tools.
 - (i) Improper operation caused damages, such as screen broken, ribbon connector pulled away, and connector pin broken by improper soldering etc.
 - (ii) Uncover or partly broken the house of ECU, the cover of machine or other tools by person other than Sacer.



- (iii) Operation did not follow the manual instructions caused damage.
 - (iv) Poor repairing skill or experience caused products working improperly.
 - (v) Wrong voltage connection caused tools damage.
6. Sacer does not provide warranty for expired products. Warranty is commencing from the date of shipping (please refer to the package).

Freight cost

1. If a customer request replacement for un-used products, all cost will be on the account of the customer.
2. If defective products have to be return and replaced, the freight cost from the customer to Sacer are on the account of the customer. The freight costs from Sacer to the customer is on the account of Sacer.

How to submit an item for warranty

When products have an problem, please come to our customer complain process:

1. Please take clear pictures of the problem products and fill out the Warranty service form for the specific products detail problem description; if you can't offer a picture, please enclose with a detail problem description.
2. Please contact our sales department to deal with complains.
3. If the below process is uncompleted, Sacer will not accept any return products.
4. The replacement or refund can only be agreed after Sacer receives the defective products customer complains.
5. On the return procedure, please discuss with the sales department for the invoice value before sending products to us.

Please fill out the warranty service form that you can find on page 75.

WARRANTY SERVICE FORM

Service Requested:

WARRANTY

* See warranty restrictions on the left

CUSTOMER INFORMATION

- Contact: _____
- PI NO: _____
- Dispatched: _____ M _____ D _____ Y
- Report Date: _____ M _____ D _____ Y

Describe Failure/Symptoms:

PART NO: _____ QTY: _____ PHOTO: YES ☐ NO ☐

Type of products:

LCD ☐ ECU ☐ SENSORS ☐ RIBBON ☐ OTHERS ☐

- _____
- _____
- _____
- _____

What's your suggestion on how to solve the problem?

- _____
- _____
- _____

* Your photo and detail description of the defective products will be greatly help us to locate and solve the problem faster.

Please send the Warranty service form by E-mail or Fax to Sacer' sales department.

Email: sales@sacer.com.cn
Tel : +86-755-22200020
Fax: +86-755-22200021

Please ship all return products by normal post or express, otherwise, it may caused products delivery delay for custom holding.

Return procedure reference:

- Please discuss with sales department of the invoice detail (products name, value, address) before you sending products to us.
- Freight cost: the freight cost from customer to Sacer is on account of customer, the freight cost from Sacer to customer in on account of Sacer.

SACER[®]

REMANUFACTURING SOLUTIONS



CONTACT US

Sacer LTD.

Location:

2/F, West Block, Building E, Longjing Industrial Park,
Bu long Rd. 335, Long gang District, Shenzhen,
China (518129)

Phone: 0086 - 755 - 22200020

Fax: 0086 - 755 - 22200021

E-mail: sales@sacer.com.cn

Main website: www.sacer.com.cn

Online shop: www.sacer-shop.com